

MDK-01 Moll Doll
Rabbit

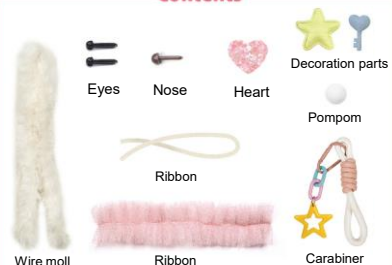
Preparation
Craft bond glue,
Needle punch, Ruler

Not necessary but convenient
Paper, Flat-nose pliers,
Toothpick, Tray for parts
Tweezers, Wet tissue



Manufacturer: Eruberu Co., Ltd
2-1-20 Ekimae Ibaraki Osaka Japan <https://eruberu.co.jp/>

Contents



Actual object may have certain level of difference compare with the image printed here, either in shape, size or pattern. Contents may be changed without notice. For the metal parts, it is possible to have certain amount of flaws on the surface, due to plate coating process.

Read the following before you start

Particles in the kit will cause injury if children accidentally swallow them. When children enjoy this kit please work together with adult.

- * Please check if the contents are all included.
- * You will need:
tweezers - for detailed work.
paper - for using craft bond, to protect a table.
wet tissue - for cleaning your hands or the table.
an apron - to protect your clothes.
a flat-nose pliers - to bend wire moll.

* Do not bend wire moll in same place many times. It may break or be distorted.

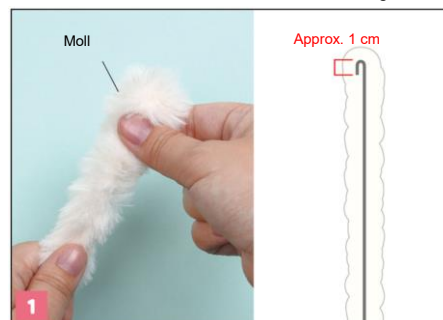
* The edge of wire is bended to prevent moll fur from coming undone.

* The wire may come out. Please handle it with care so as not to hurt your fingers.

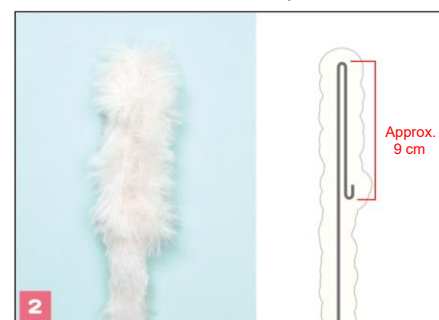
How to make

★ Enjoy arranging it yourself.

★ Be careful of a wire in a moll. When measuring the length, measure the wire, not fur. The completed moll doll looks different depend on the strength of bending.



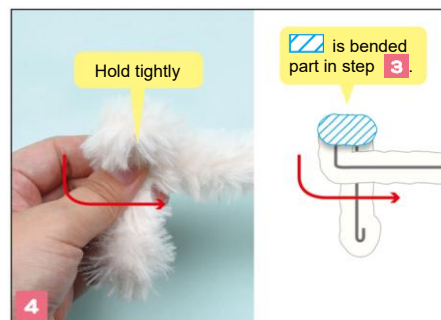
Fold the moll approximately 1cm from the edge as shown in the picture above.



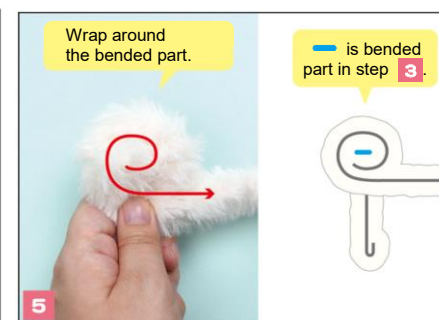
Fold the moll approximately 9cm in the opposite direction as shown in the picture above.



Bend the moll approximately 2cm toward you as shown in the picture above.



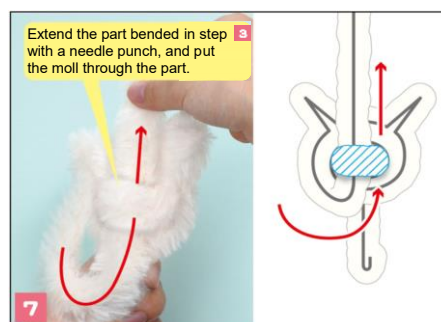
Bend the longer moll so that it comes on the shorter one.



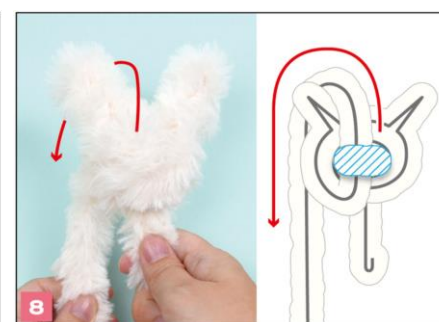
Wrap the longer moll around the part you bended in step 3.



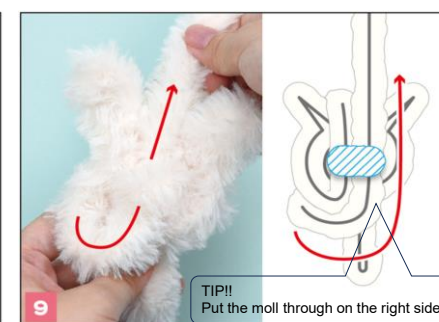
Wrap the longer moll around the part again. Make ears as shown in the picture above.



Put the longer moll through the center part (blue hatched) from the bottom. Pull the moll up as shown in the picture above.



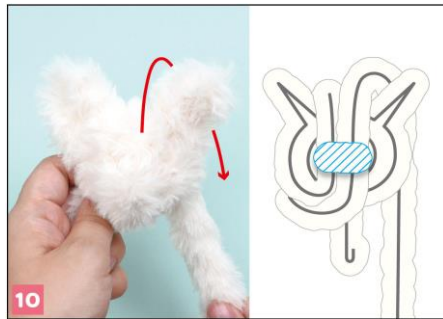
Hang the moll on the left ear and pull it down as shown in the picture above.



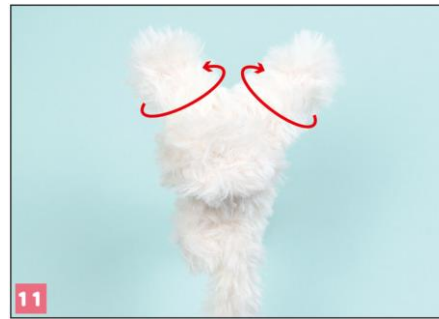
Put the longer moll through the center part (blue hatched) from the bottom again. Pull the moll up.

How to make

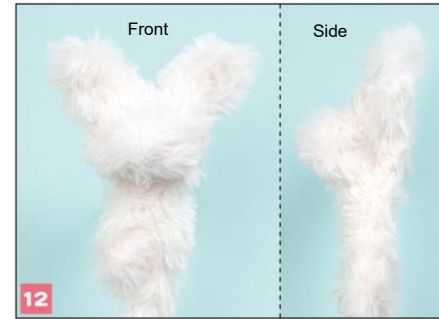
★ Enjoy arranging it yourself.



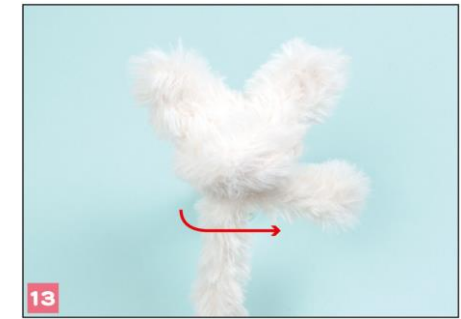
10 Hang the longer moll on the right ear , and pull it down.



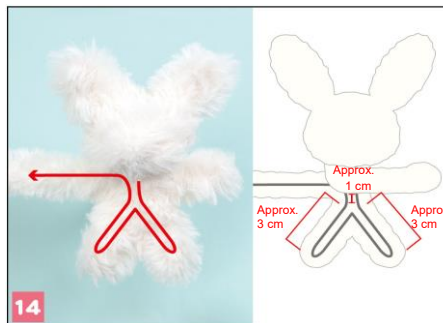
11 Twist ears inward.



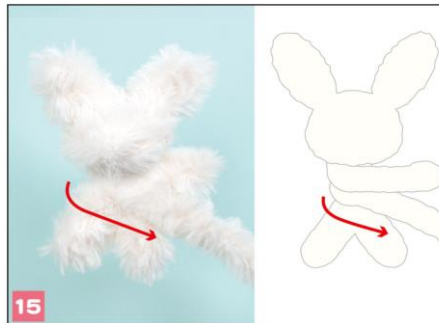
12 Adjust the face shape by pushing it with fingers.



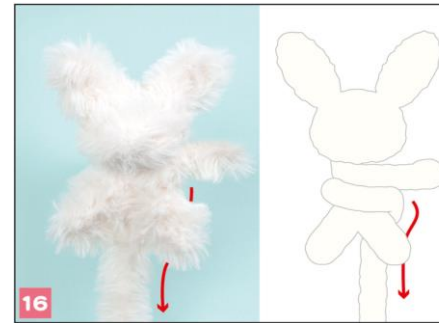
13 Bend the shorter moll to the right as it is on the longer one and twist it once.



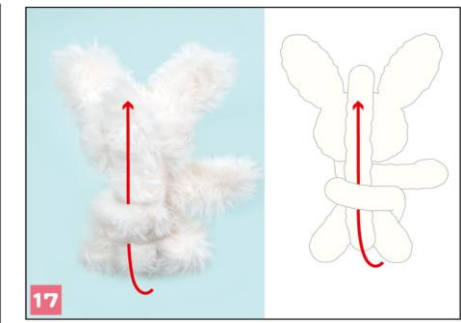
14 Bend the longer moll to make legs as shown in the picture above.



15 Bend the longer moll to the right as shown in the picture above.



16 Hang the longer moll on the right leg as shown in the picture above and bend it downwards.



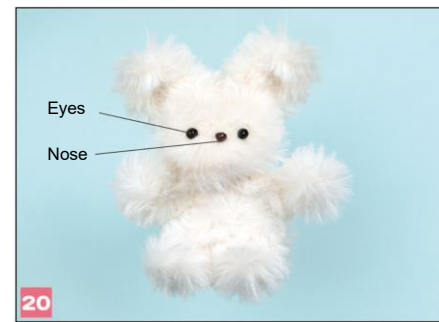
17 Put the moll through between the legs, and put it through as shown in the picture above.



18 Wrap the longer moll around the body once or twice. Fold the remaining moll in half to make an arm.



19 Twist legs inwards. Bend ears, arms and legs inwards.



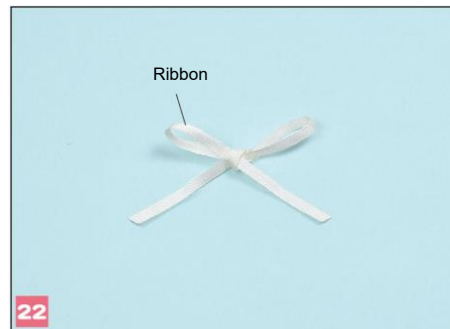
20 Stick a needle punch in the part where you want to put eyes and nose. Insert eyes and nose after putting craft bond glue on them.



21 Put some craft glue on ribbon, and wrap it around the neck as shown in the picture above.
All rights reserved.

How to make

★ Enjoy arranging it yourself.



Tie a ribbon as shown in the picture above.



Attach ribbon, heart, decorative parts and pompom to the body with craft bond glue.



Put a carabiner through ear. Done!!