

Sweet Villa

[Tools needed]

craft bond glue, glue stick, utility knife, cutting mat, scissors, tweezers, ruler, pencils, toothpick, sand paper, nippers, flat-nose pliers, round-nose pliers, scotch tape, eyeleteer

[Not necessary but convenient]

tray for parts, glue-gun, wet wiper, paper, spatula, phillips-head screwdriver, double-sided adhesive tape

Read the following before you start.

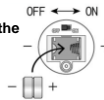
* Please check if the contents are all included. * Please refer to the images and TIP reference while building your model.

* You will need:

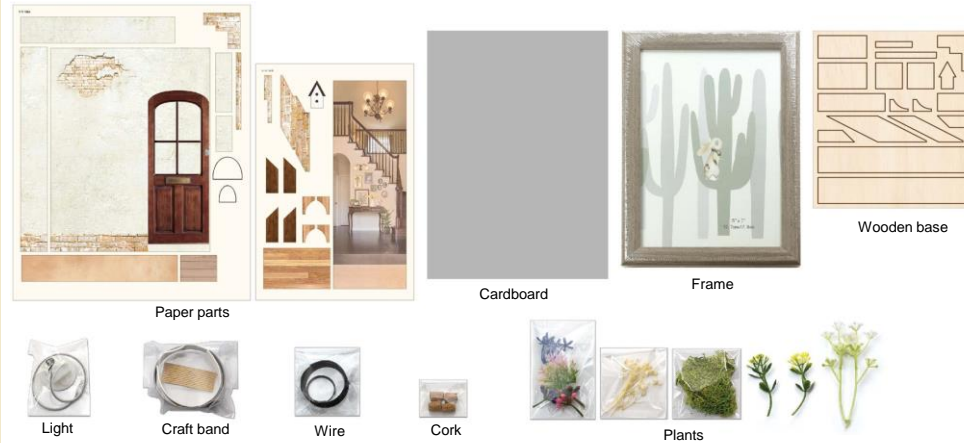
- a toothpick...to use bond glue and/or resin.
- a wet towel... to wipe your hands and to clean your workplace.
- paper... when using bond glue and to protect surfaces while working.
- tweezers... for detail work.
- A glue gun is also useful instead of a bond glue.

HOW TO EXCHANGE THE COIN CELL BATTERY

- Turn off and unscrew the screws with the screw driver. Open the lid.
- Remove the used battery. Place the new one, and make sure the direction of + and -.
- Close the lid and fasten the screws.



[Materials included]



* Images may vary to actual contents. * For materials in this kit, their colors, shapes, sizes and pattern may vary, due to manufacturing process. Natural wooden plates are naturally generated, their colors and wood grain will not be identical. * The wooden plate may warp slightly due to the excessive humidity. * For the metal parts, it is possible to have certain amount of flaws on the surface, due to plate coating process.

[About Preserved moss]

* Preserved moss may get on your clothes, wall or floor. * If moss is exposed to fluorescent light or direct sunshine for long time, the colors may fade. Store in a cool, dry place away from direct sunlight. * Depending on the season, the colors, shapes and sizes of moss may vary. * This product is specially for craft. Do not eat.

[About Lamp]

* Remove an insulating sheet before use. * Attached battery is a test battery. * When running out of battery, please purchase a coin cell battery (LR:44). * Do not use other kinds of battery or used battery. * If you do not use for a long time, store it with the battery removed. * Keep away from water. * Do not use the lamp for anything other than the intended purpose.

Caution!

Keep out of reach of children and pets. Maybe harmful if swallowed.

Manufacturer: Eruberu Co., Ltd

2-1-20 Ekimae Ibaraki Osaka Japan <https://eruberu.co.jp/>

PREPARATION- REFERENCES

Paste the Paper parts on the Wooden parts



Cut apart on the joints with utility knife.



Paste wooden parts and paper parts of the same number referring to the Parts number list.



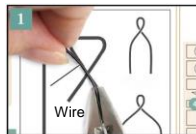
Cut off the protruding with the scissors or utility knife.

Tip!

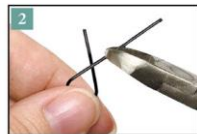
- * This wooden plate is laser processed. Wipe cut surfaces to remove dirt and dust before use.
- * Sand cut surfaces after removal.
- * Pasting the Paper parts on the Wooden parts with the Glue stick will make your artwork look neat.
- * Apply the Adhesive on the edges of the Paper parts to fix them firmly.
- * Make sure the Paper parts dry before cutting of the protruding to prevent it from being deformed.

Curve the wire

Bending in the opposite direction which has been bended makes it being deformed or split.



Curve the wire referring to the Pattern sheet.
* Please see Japanese instruction on page 1. There is an actual size pattern.

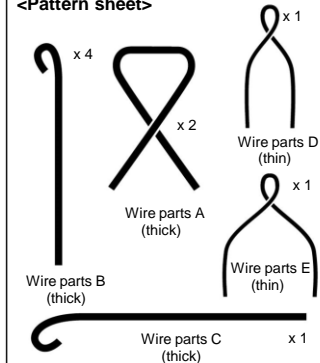


Cut the protruding with the nippers.

POINT

- Roll into a circle
- Curve the edge
- Wrap it around a pen.
- Pinch the edge with Pliers and bend it.

<Pattern sheet>



* Please see Japanese instruction on page 1. There is an actual size pattern.

Craft band

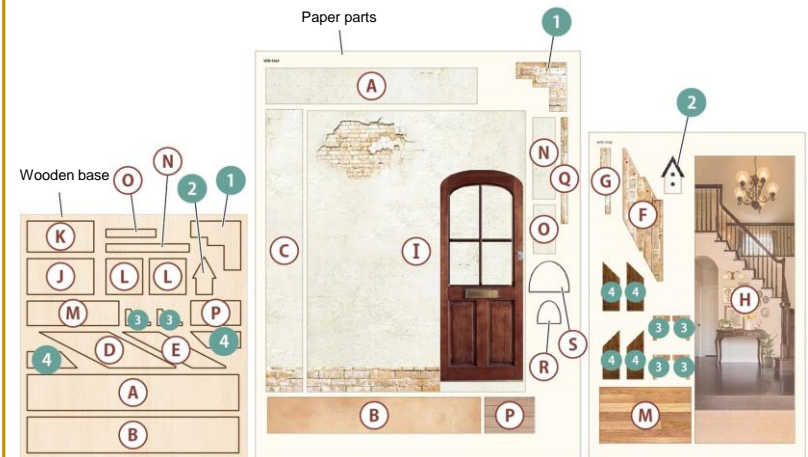
Ensure use the correct color of band for each design element.

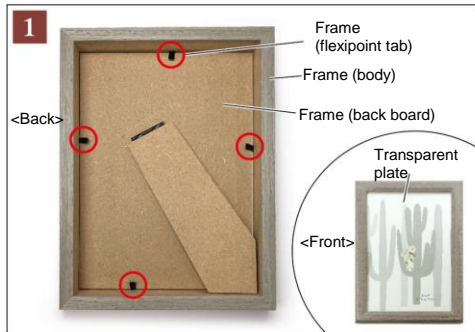


*The craft bands vary slightly in width or the number of twisted paper strings, depending on their colors.

Part number list

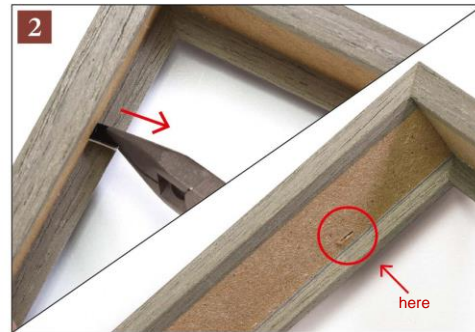
Paste the wooden parts and the paper parts with the same number, same color.
* Paste on one side of ①~④, paste on both sides of ⑤~⑧. ⑨~⑩ will be used in HOW TO MAKE.
* When you work on, please refer to the numbers printed here.
Only numbers are printed in HOW TO MAKE section instead of parts name.



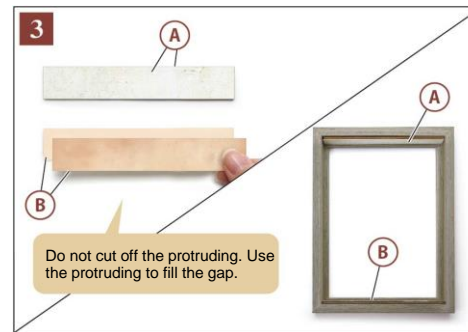


Using your fingers or any flat knife, push the flexipoint tabs up and away from the backing. Take out the back board from the body. * if it is stiff, use a spatula.

The transparent plate will be used in 9.



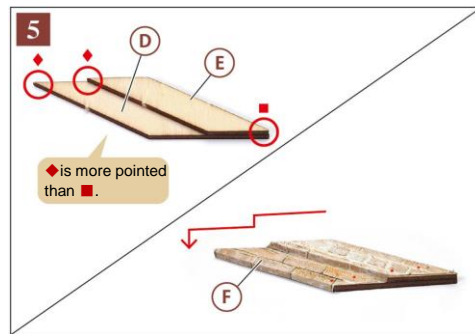
Pull out the tabs with the nippers from the frame body.



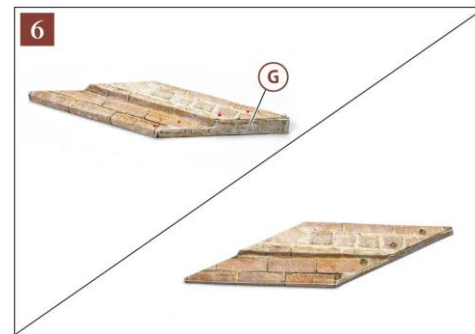
Paste the paper part in the center of the wooden part, and paste them on the body of the frame (top and bottom).



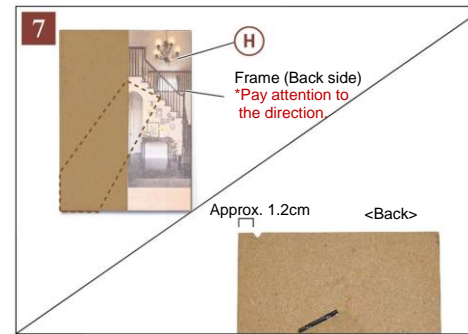
Paste C on the side of the frame body.



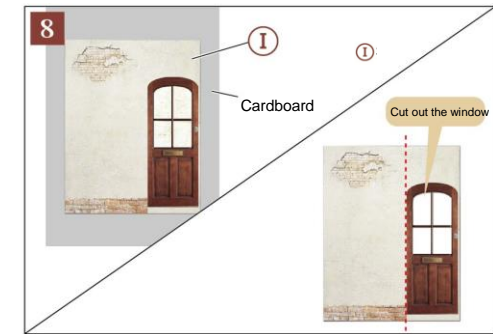
Paste each part.



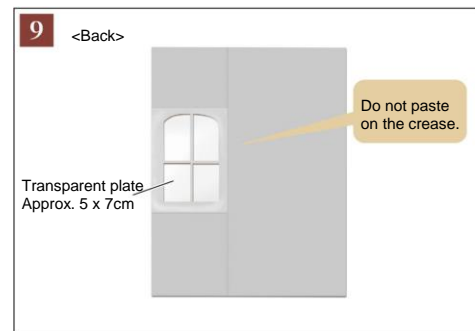
Paste G, and punch a hole on with an eyelet.



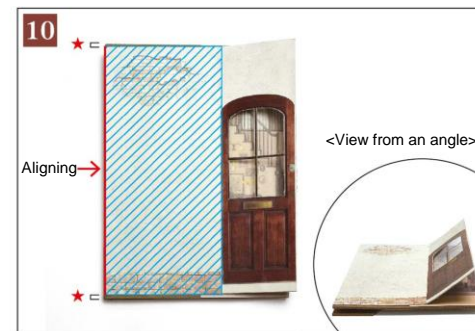
Paste the paper parts on the back board of the frame. Turn it over and add a V-shaped notch with the nippers to put the light cable through.



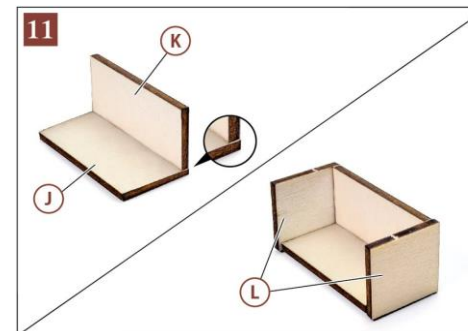
Paste I on the cardboard, and cut out along. Add etching on and make a crease.



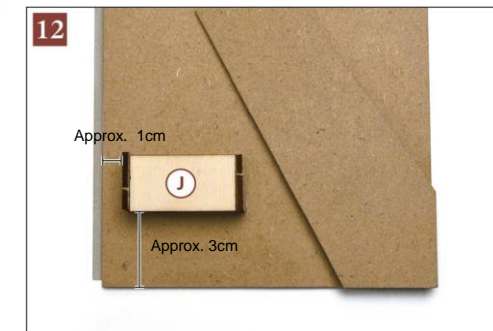
Peel off the protection film from the transparent plate and cut into approx. 5 x 7cm. Paste it on the back of 8.



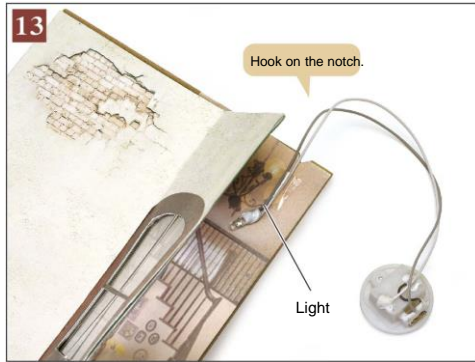
Apply the craft bond glue on. Paste the part made in 9 aligning corners and edges, and make the margins of top/bottom equally (★).



Paste each part.



Paste L on the back board of the frame.



Turn it over, paste light with scotch tape.



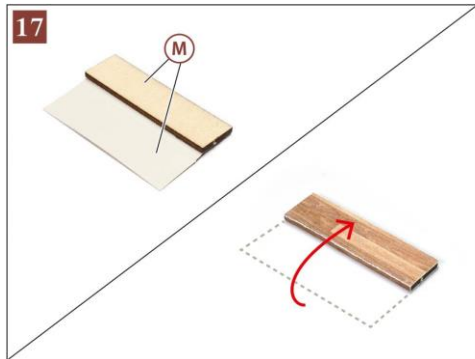
Paste **6** on the part **B** temporarily.



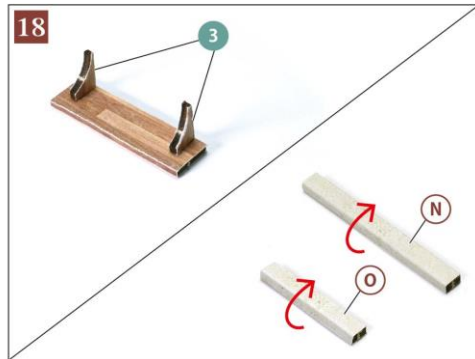
Attach **10** and arrange other parts.
* It will be easy to paste them with double-sided tape.



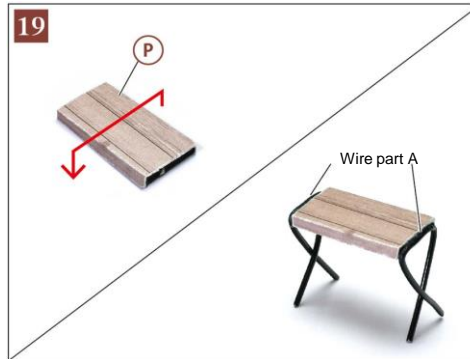
* If there is protruding out of the frame, cut it off before applying the craft bond glue.
* Paste them temporarily with scotch tape until the parts fix.



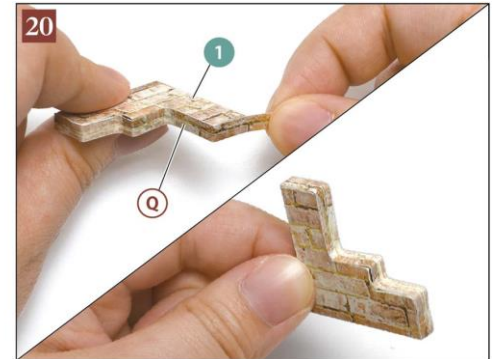
Paste the wooden parts and the paper parts of same number.
* Paste the paper part around the wooden part like wrapping.



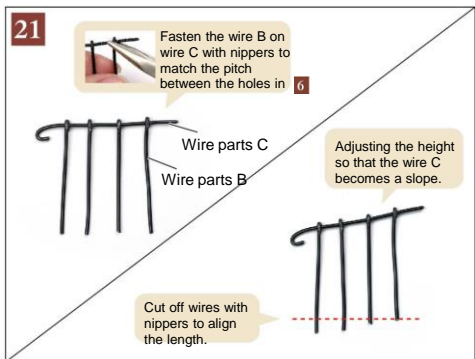
Paste each part in the same way of **17**.



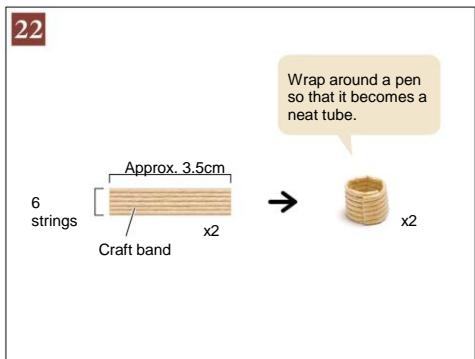
Paste each part.



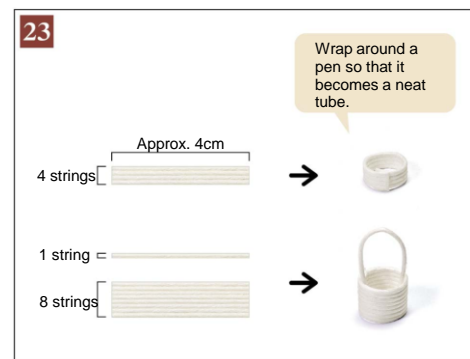
Paste **Q** on the side of **1**, cut off the protruding.



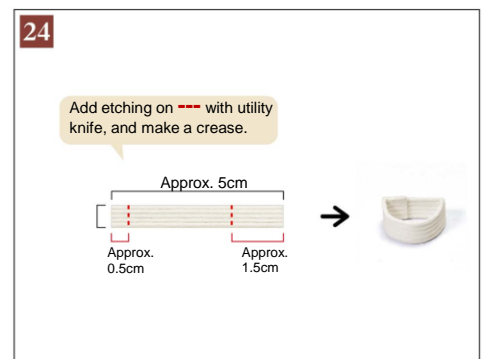
Assemble the Wire parts.



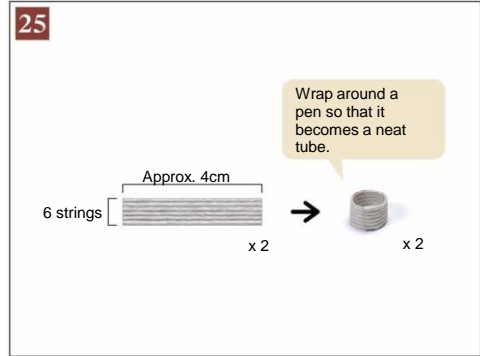
Cut the craft band into approx. 3.5cm, and split it as shown in the picture above. Make tube parts.



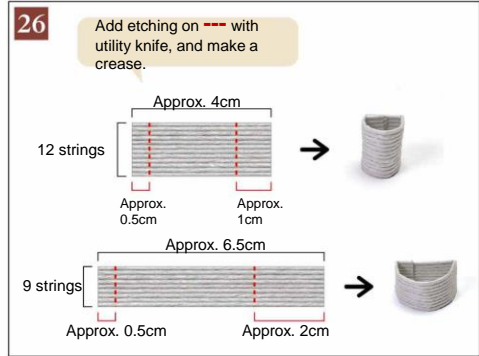
Cut the craft band into approx. 4cm, split it as shown in the picture above. Make parts.



Cut the craft band into approx. 5cm, and split it as shown in the picture above. Make a part.



Cut the craft band (gray) into approx. 4cm, and split it as shown in the picture above. Make tube parts.



Cut the craft band (gray) into 4cm and 6.5cm, and split them as shown in the picture above. Make parts.



Paste the paper parts on 26, and cut off the protruding.

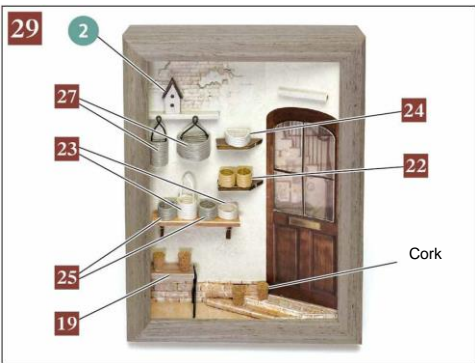


Paste each part.



Paste the plants.
*Cut the plants into appropriate length and divide into some bunches depending on the spot you would like to attach.

FINISH!



Paste each part.



Paste each part.



As if wandering into the antique world