

Antique room

[Tools needed]

craft bond glue, glue stick, utility knife, cutting mat, scissors, tweezers, ruler, pencils, toothpick, sand paper, nippers, flat-nose pliers, round-nose pliers, scotch tape

[Not necessary but convenient]

tray for parts, glue-gun, wet wiper, paper, spatula, phillips-head screwdriver

Read the following before you start.

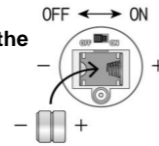
* Please check if the contents are all included. * Please refer to the images and TIP reference while building your model.

* You will need:

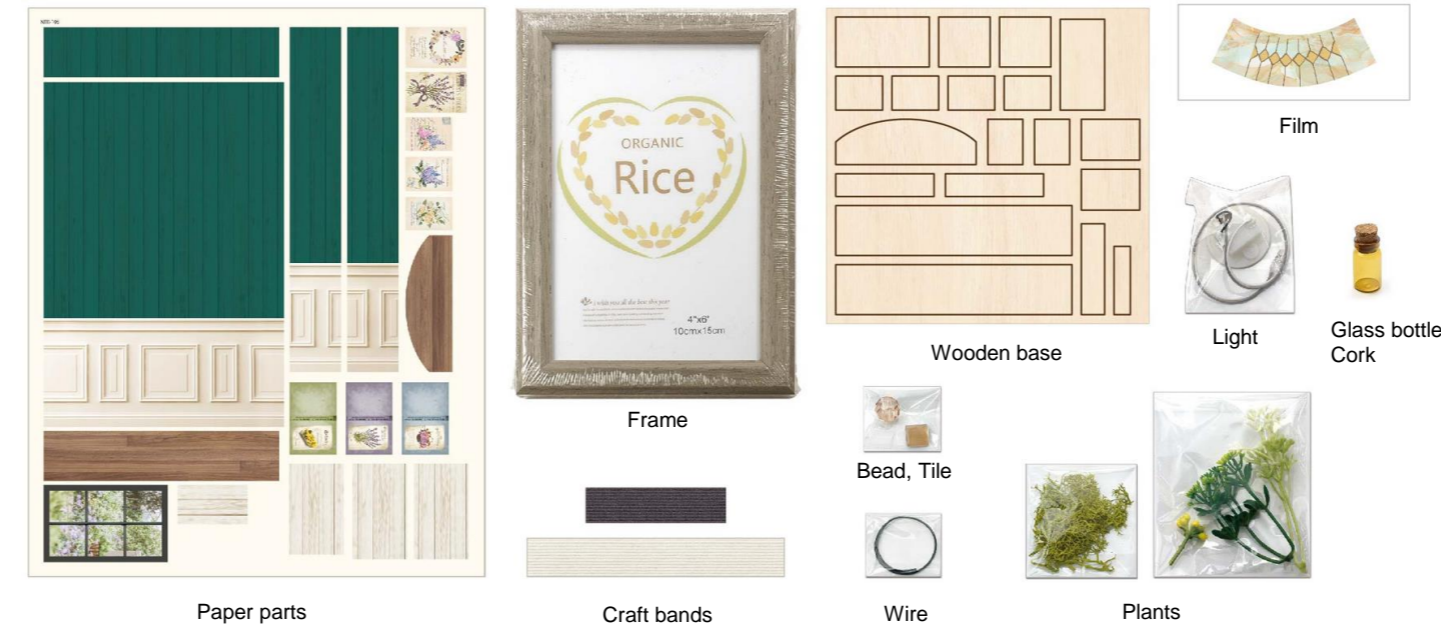
- a toothpick...to use bond glue and/or resin.
- a wet towel... to wipe your hands and to clean your workplace.
- paper... when using bond glue and to protect surfaces while working.
- tweezers... for detail work.
- A glue gun is also useful instead of a bond glue.

HOW TO EXCHANGE THE COIN CELL BATTERY

- Turn off and unscrew the screws with the screw driver. Open the lid.
- Remove the used battery. Place the new one, and make sure the direction of + and -.
- Close the lid and fasten the screws.



[Materials included]



* Images may vary to actual contents. * For materials in this kit, their colors, shapes, sizes and pattern may vary, due to manufacturing process. Natural wooden plates are naturally generated, their colors and wood grain will not be identical. * The wooden plate may warp slightly due to the excessive humidity. * For the metal parts, it is possible to have certain amount of flaws on the surface, due to plate coating process.

[About Preserved moss]

* Preserved moss may get on your clothes, wall or floor. * If moss is exposed to fluorescent light or direct sunshine for long time, the colors may fade. Store in a cool, dry place away from direct sunlight. * Depending on the season, the colors, shapes and sizes of moss may vary. * This product is specially for craft. Do not eat.

[About Lamp]

* Remove an insulating sheet before use. * Attached battery is a test battery. * When running out of battery, please purchase a coin cell battery (LR:44). * Do not use other kinds of battery or used battery. * If you do not use for a long time, store it with the battery removed. * Keep away from water. * Do not use the lamp for anything other than the intended purpose.

Caution!

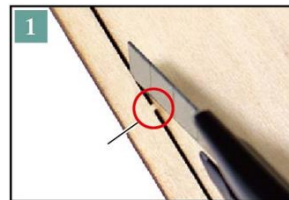
Keep out of reach of children and pets. Maybe harmful if swallowed.

Manufacturer: Eruberu Co., Ltd

2-1-20 Ekimae Ibaraki Osaka Japan <https://eruberu.co.jp/>

PREPARATION-REFERENCES

Paste the paper parts on the wooden parts



1 Cut apart on the joints with utility knife.



2 Paste wooden parts and paper parts of the same number referring to the Parts number list.

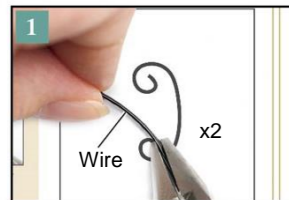


3 Cut off the protruding with the scissors or utility knife.

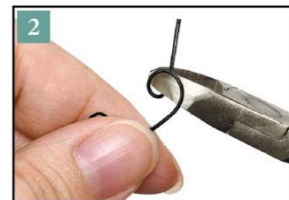
Tip!

- * This wooden plate is laser processed. Wipe cut surfaces to remove dirt and dust before use.
- * Sand cut surfaces after removal.
- *Pasting the Paper parts on the Wooden parts with the Glue stick will make your artwork look neat.
- *Apply the Adhesive on the edges of the Paper parts to fix them firmly.
- *Make sure the Paper parts dry before cutting of the protruding to prevent it from being deformed.

Curve the wire Bending in the opposite direction which has been bended makes it being deformed or split.



1 Curve the wire referring to the Pattern sheet. * Please see Japanese instruction on page 1. There is an actual size pattern.



2 Cut the protruding with the Nippers.

TIP

Roll into a circle

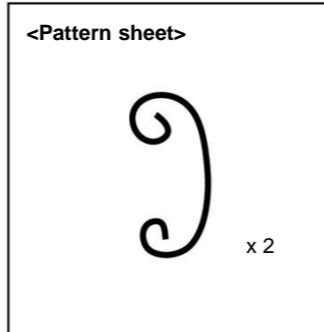


Wrap it around a pen.

Curve the edge



Pinch the end of the wire with pliers, and bend it.



* Please see Japanese instruction on page 1. There is an actual size pattern.

Craft bands

Ensure use the correct color of band for each design element.

*The craft bands vary slightly in width or the number of twisted paper strings, depending on their colors.



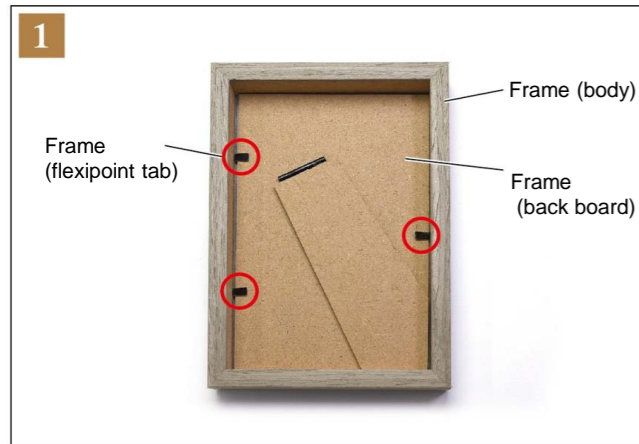
12-13 strings

Part number list Paste the wooden parts and the paper parts with the same number, same color.

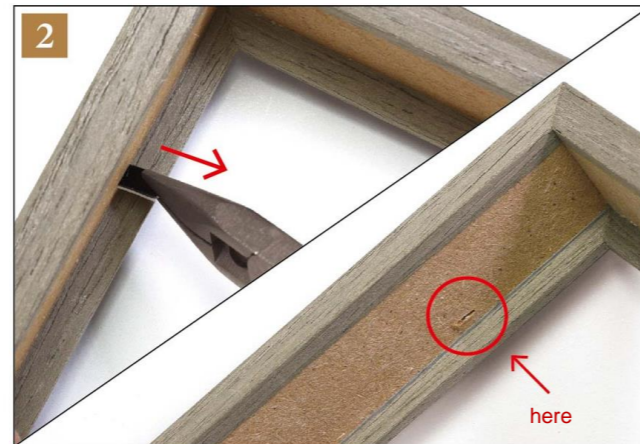
* Paste on one side of ①~⑥. ①~⑥ will be used in HOW TO MAKE.

* When you work on, refer to the numbers printed here. Only numbers are printed in HOW TO MAKE section instead of parts name.

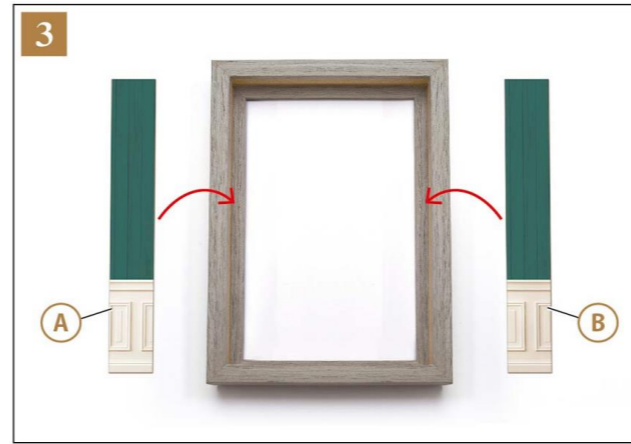




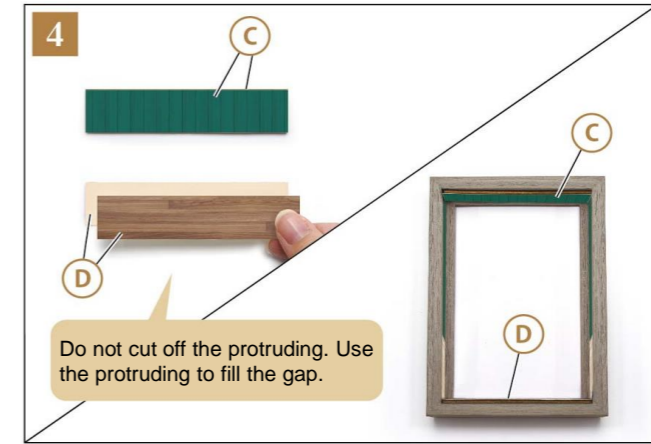
Using your fingers or any flat knife, push the flexipoint tabs up and away from the backing. Take out the back board from the body.
*if it is stiff, use a spatula.



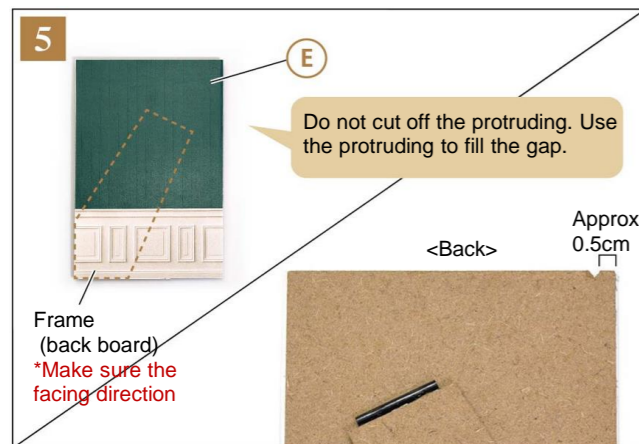
Pull out the tabs with the nippers from the frame body.



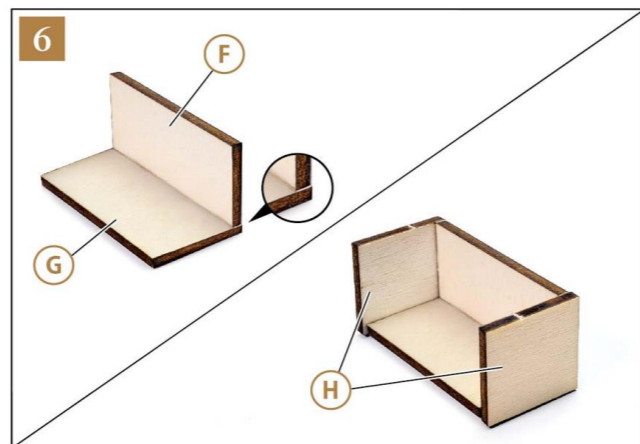
Paste the paper parts on the both sides of the body.



Paste the paper part in the center of the wooden part, and paste it on the body of the frame.



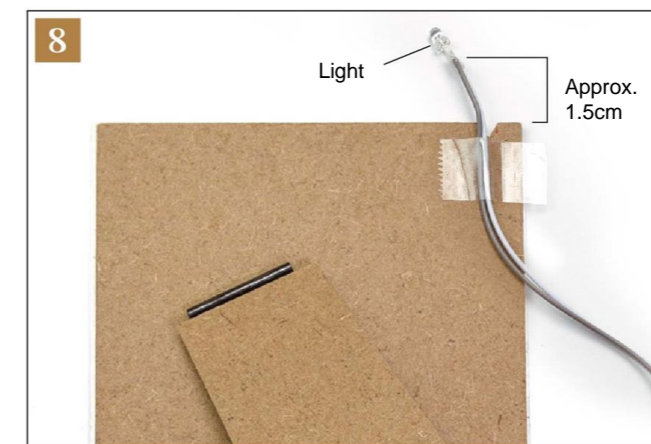
Paste the paper parts in the center of the back board. Turning it over, make a V-shaped notch to put the cable through.



Paste each part as shown in the picture above.



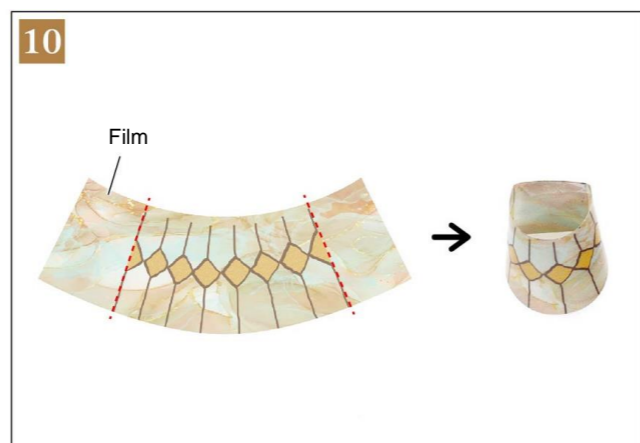
Paste 6 on the back board.



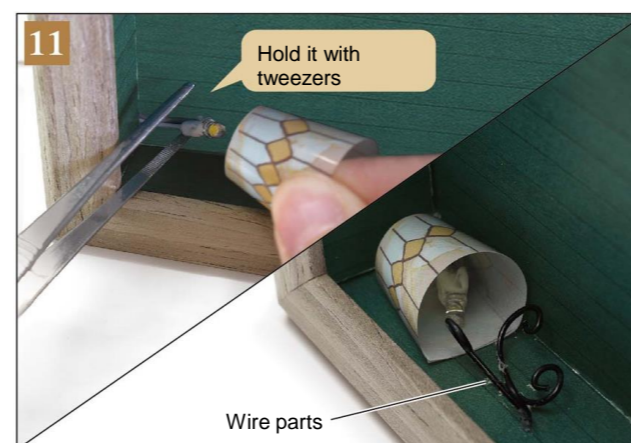
Paste the light with scotch tape temporarily.
* when you paste some parts temporarily, do not use the tape too sticky.



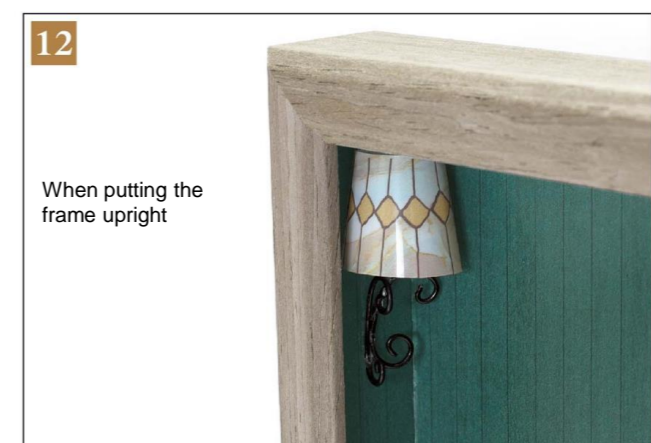
Paste the body and the back board together to make a base.
* If there is protruding out of the frame, cut it off before applying the craft bond glue.
* Paste them temporarily with scotch tape until the parts fix.



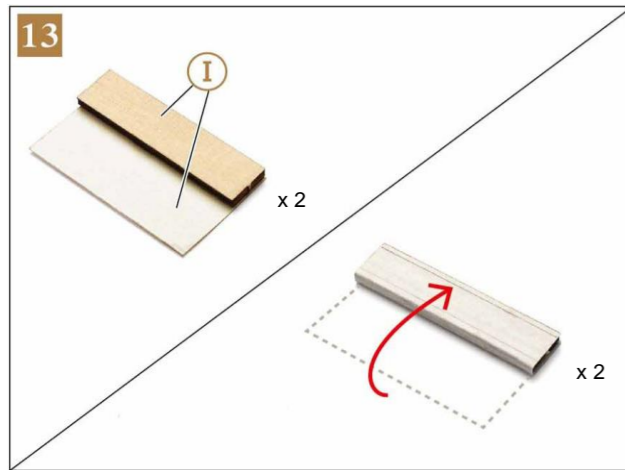
Cut out the film and fold on ---. Paste the both end of the film together.



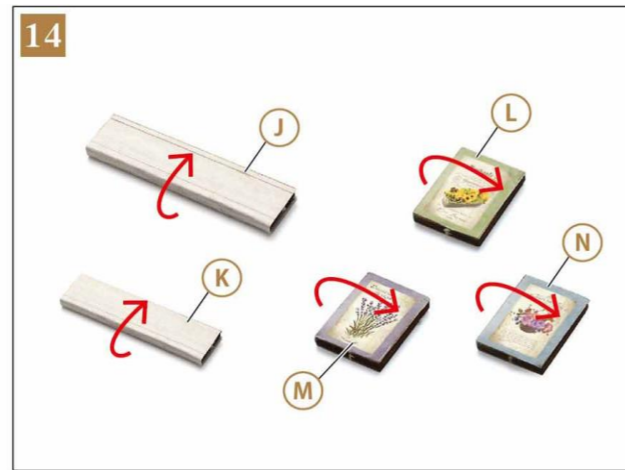
Lay down the base. Apply the glue to the flat face of the film parts made in 10, and paste on the base. Paste the wire parts.



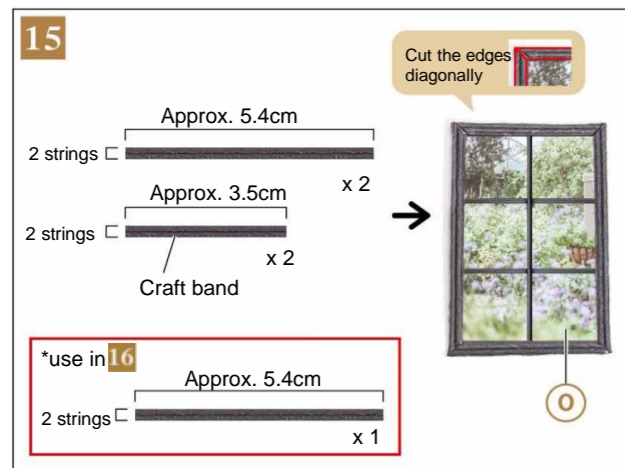
* Make sure the Light does not contact the film in order to prevent the film being deformed when turning on Light.



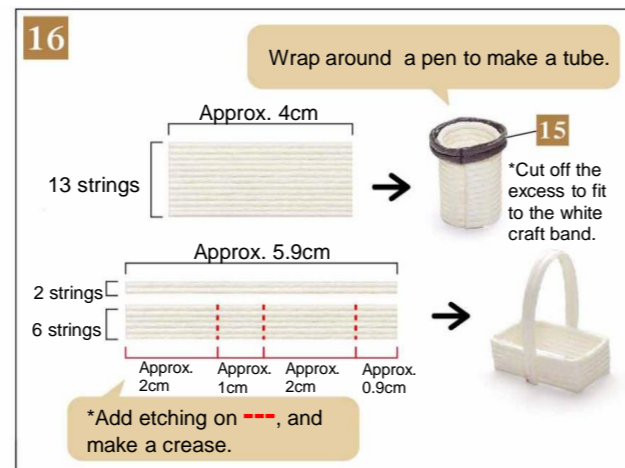
Paste the wooden parts and the paper parts of same number.
* Paste the paper part around the wooden part like wrapping.



Paste them in the same way as 13.



Cut the craft band (gray) into approx. 5.4cm and split it as shown in the picture above.
Paste them on O.

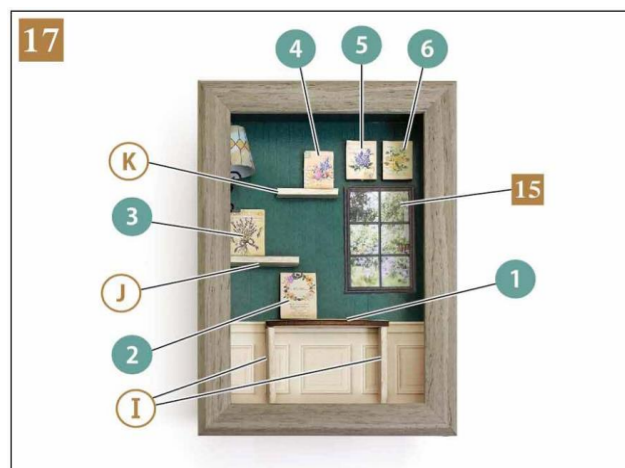


Cut the Craft band (white) into pieces shown above.



Paste the plants.
*Cut the plants into appropriate length and divide into some bunches depending on the spot you would like to attach.

FINISH!



Paste the parts in order from bottom to top.
(I) → 1 → 2 → J → 3 → 15 → K → 4 → 5 → 6



Attach the parts.



As if wandering into the antique world