

Basic Use

The following pictures are just examples. Color, size, shape and pattern of materials in this kit may be different from pictures.

Work away from direct sunlight and UV ray. When you don't use a lamp, please turn it off.

A How to make colors



Mix the powder and resin on an OPP sheet.

* Grind powder and mix them.

* Be careful not to put too much powder into the resin. Resin may not harden. Also, the surface may not be flat after hardening.



Gradation

Apply the several colored resins to the mold. Blend the boundary layer with a toothpick to create a smooth transition.



Marble

Apply the several colored resins to the mold, and stir them with a toothpick.

If air bubbles form in the resin, use a toothpick or an embossing heat tool to pop and remove them before it hardens.

B How to use a silicone mold



1

Pour the resin to a silicone mold to the top.

* Place a cardboard and a silicone mat under your work, so as to keep your work desk clean. Hence, you can move your work into the lamp right away and make it more convenient.



2

Harden it with a resin lamp.

Apply the lamp from the top surface as shown in the picture above. Then turn it over and apply the lamp from the bottom surface to harden surely.

When Harden completely;
for UV resin: Approx. 5min. /
for LED resin: 1~2 min.

When Harden temporarily;
for UV resin and LED resin:
Approx. 20~30sec.

* The time required depends on the season and the size of the craft. Read instruction of prepared resin before using the resin.



3

Remove the resin piece from the silicone mold after it hardens.

* When removing from the mold, do not use a spatula, or do not excessively bend.

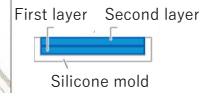


4

After removing from the mold, filing with craft file (flat) or scissors makes it beautiful finish.

* Coat the filed resin piece with the clear resin to make it beautiful finish.

TIP



When using colored resin;

Your resin project will harden quicker and more clearly if you apply the resin into two layers.

C How to cut a design film



Mark a design film along a silicone mold. Cut it inside of the line.



Cut a film outside of the design.

* Cut the design out from the film without margin. That makes your project beautiful finished.

D How to make a film part



Apply resin on an all over the film to coat it.

Harden 1~2 mins.

E How to place a design film or design parts



1

Spread resin out to the place you want to put the design film and make it thin.



2

Coat the entire resin piece with clear resin to cover the film part.

* Your resin project will be clear if you apply resin to the entire surface of a resin piece.

F How to attach jewelry findings



1

Apply clear resin a little bit to the resin piece you want to put a jewelry finding, and put it onto the resin piece.



2

To increase adhesive strength, apply a small amount of resin to the bottom of the cap.

* Harden it from back side or the side of the resin piece if you need.



1

Spread bond glue on a resin piece you want to put a jewelry finding.

TIP

Use Clear resin;
when attaching a small jewelry finding to the resin piece.

Use bond glue;
When attaching a larger jewelry finding or a jewelry finding which touches your skin/hair directly.

* Check the direction of the jewelry finding before attaching it.

* Masking tape makes easier to work when your resin project is unstable.



How to twist an Eye Pin, Head Pin



TIP

Make sure to close the pin without a gap between the pin and the beads.

Thread a bead onto the eye pin/head pin. Make a 90 degree bend just above the bead with needle-nose pliers (pliers). Cut the pin, leaving a tail that's about 7mm/0.3inch long. Position the round nose pliers at the end of the tail. Wrap the wire toward you to create a loop.

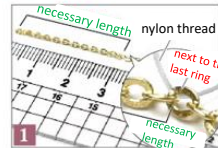
* When making a loop on both sides of an eye pin, bend the end so as to create "S".



* When a decorative part passes through a pin, insert a spangle between a bead and the end of pin.



How to cut chain



Put nylon thread on a ring as shown in the picture above after measuring the necessary length.



Cut a ring you put nylon thread on with nippers.

TIP

If the chain ring is not wide enough, make it wide with an eyeleteer carefully.



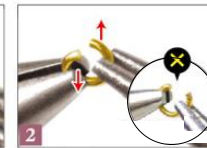
* Take care not to break the ring.



How to open and close jump rings



Hold the jump ring with needle-nose pliers (pliers) and round needle pliers on each side of the opening.



Gently twist one plier straight downward, and the other plier straight upward to open the jump ring.



Connect it to whatever you're using, and grasp the jump ring the same way again with both pliers. Gently bend one plier up and the other plier down to close the jump ring again.

How to open a ring



* Make sure not to pull outwards or the ends.

Attention

Pay attention when dealing with metal parts

As the color of plate coating may be affected if they were touched with sweat or stored in dirt, please wipe away the sweats or dirt with a soft cloth before you store them. We also recommend you to store the metal parts in a bag with zipper. Please never wipe the metal parts with jewelry polishing cloth containing abrasive material, that will affect the color of the plate coating.

Cautions for storage and handling for silicone mold

●Suitable materials ※Do not use with items made of silicone.

poxy resin, UV resin, LED&UV resin, LED&UV Color Art resin, Super Stone Ceramic powder, etc.

●Caution

Wipe the dust and dirt from silicone mold before use.

Do not use with food. Do not eat or swallow.

A silicone mold is perishable goods. It will degrade after many years and uses. When using with anything hardened by chemical reaction repeatedly, it may be difficult to remove your resin project from the mold.

When using with colored material, the color may stain on the mold. Wipe it off before reuse.

Depending on the storage condition, durability may change.

When removing from the mold, do not use a spatula, or do not excessively bend. This mold and your resin project may be damaged.

When using with colored material, the color may stain on the mold. Wipe it off before reuse.

Do not put this product on a printed paper, it may be stained with ink.

This mold is an imported product. There may be some scratches.

When producing a three-dimensional shape silicone mold, material to have heat-resistant, elasticity, and strength, and prevent from deterioration is put in the mold. Because of that, the color of the mold may be yellowish, and also the color will be much yellower with time. This is unavoidable phenomenon to maintain the characteristics, but it does not have an effect on creating resin artwork.

●Storage

Do not store in direct sunlight and avoid dirt.

Keep out of reach of children and pets.

Keep away from heat. The shape may change.


Do not put one over another when storage.

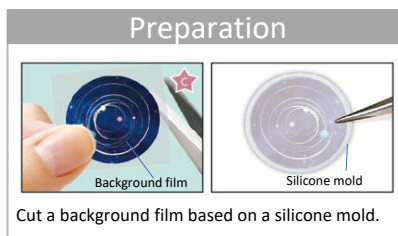
Depending on the storage condition, durability may change.

Dispose of them according to your local regulations.

FUK-112

How to make

- * Read the Basic Use before you start.
- * See the <Example of a completed design>.
- * Refer to Basic Use when this mark  is shown.



Moon and Star Charm

Example of a completed design



1 Clear resin
colored resin Purple

Pour clear resin and the colored resin to a silicone mold until it is 8/10 full. Create the gradation as shown in the picture above.

2 Background film

Place the design film face down on the silicone mold.

3 Clear resin
colored resin Purple

Add the clear resin and the colored resin to the silicone mold until it is full. Create the gradation. After hardening, take out the resin piece from the mold.

4 colored resin Gold

Turn over the resin piece **3** and pour the colored resin to .

5 design film
glitter

Apply a thin layer of clear resin to the whole surface, and put the design films and glitter onto it.

6

Cover the whole surface with the clear resin.

7 glitter

Apply a thin layer of clear resin to the bottom surface, and put the glitter onto it. Harden it temporarily and cover the whole surface with the clear resin. Then harden it.

8 key ring
jump ring
eyebolt cap

Attach the jewelry findings as shown in the picture above.

DONE!!

Constellation Charm

Example of a completed design



1 Clear resin

Pour clear resin to a silicone mold until it is full.


2 glitter

Place a small amount of glitter into it.

3 Background film

Place the design film face down into it. After hardening, take out the resin piece from the mold.

4 colored resin Silver

Turn over the resin piece **3** and pour the colored resin to .

5 glitter
design film

Apply a thin layer of clear resin to the surface, and put the design films and glitter onto it.

6

Cover the whole surface with the clear resin.

7 glitter

Apply a thin layer of clear resin to the bottom surface, and put the glitter onto it. Harden it temporarily and cover the whole surface with the clear resin. Then harden it.

8 key ring
jump ring
eyebolt cap

Attach the jewelry findings as shown in the picture above.

DONE!!