

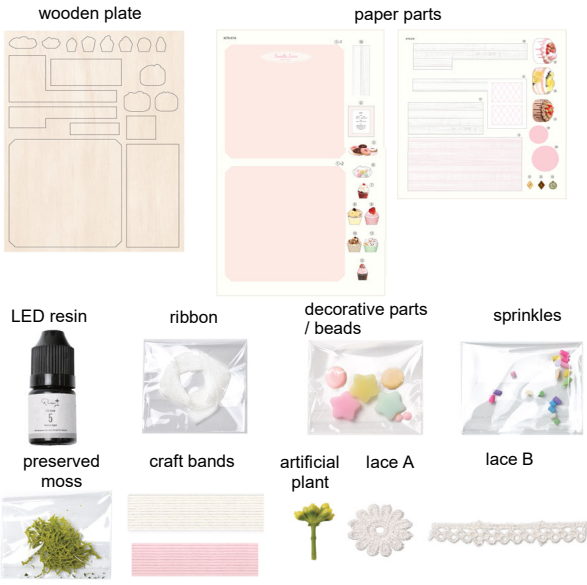
[Tools needed]

LED lamp, craft bond glue, glue stick, utility knife, cutting mat, scissors, tweezers, ruler, pencils, toothpick, sand paper

[Not necessary but convenient]

craft buffer, tray for parts, thick papers, paper, silicone mat, glue-gun, wet wiper

[Materials included]



* Images may vary to actual contents. * For materials in this kit, their colors, shapes, sizes and pattern may vary, due to manufacturing process. Natural wooden plates are naturally generated, their colors and wood grain will not be identical. * The wooden plate may warp slightly due to the excessive humidity
 [About Preserved moss]
 * Preserved moss may get on your clothes, wall or floor. * If moss is exposed to fluorescent light or direct sunshine for long time, the colors may fade. Store in a cool, dry place away from direct sunlight. * Depending on the season, the colors, shapes and sizes of moss may vary. * This product

Caution!

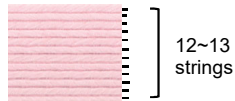
Keep out of reach of children and pets. Maybe harmful if swallowed.

Manufacturer: Eruberu Co., Ltd

2-1-20 Ekimae Ibaraki Osaka Japan <https://eruberu.co.jp/>

Cutting craft bands

Ensure use the correct color of band for each design element.



Read the following before you start.

* Please check if the contents are all included. * Please refer to the images and TIP reference while building your model.

* You will need:

- a toothpick...to use bond glue and/or resin.
- a wet towel... to wipe your hands and to clean your workplace.
- paper... when using bond glue and to protect surfaces while working.
- tweezers... for detail work.
- A glue gun is also useful instead of a bond glue.

* Work away from direct sunlight and UV ray. When you don't use lamp, please turn it off. *Place a cardboard and a silicone mat under your work, so as to keep your work desk clean. Hence, you can move your work into the lamp right away and make it more convenient. * Printed images may be come off when rubbing the paper parts with an eraser or a

Preparation

Please see numbers and letters: Paper parts ①~⑳ Wooden parts ①~⑱

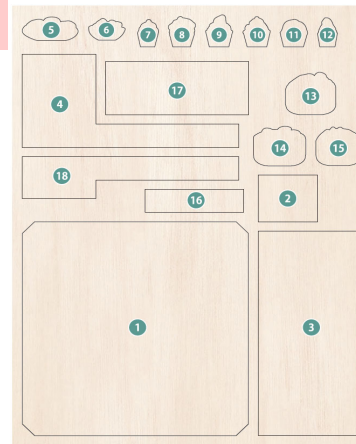
Separating the wooden pieces from the wooden plate



Cut off the wood pieces with a craft

Tip!

* This wooden plate is laser processed. Wipe cut surfaces to remove dirt and dust before use.
 * Sand cut surfaces after removal.



Creating a base



Pasting paper parts onto wooden pieces

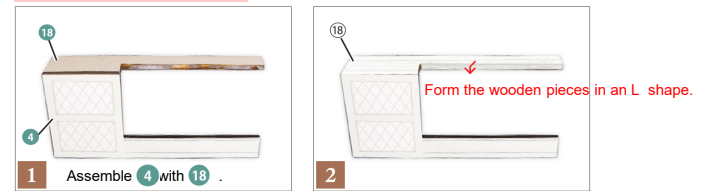
Paste paper parts to corresponding wooden pieces.

Paste the paper parts onto a wooden pieces ①~⑱.



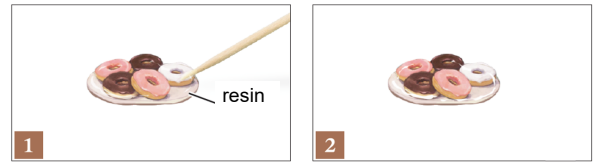
Form the wooden pieces in an L shape as shown above.

Creating a shelf



Coating parts with resin

Apply resin to ⑬ ⑭ in the next step.



Apply resin to the wooden pieces pasted paper parts.

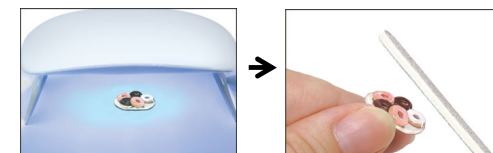
Cure it with LED lamp.

Curing resin

Time required

LED resin: 1~2 mins

* The time required depends on the season and the size of the craft.



Cure parts applied resin with LED lamp.

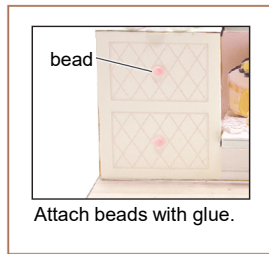
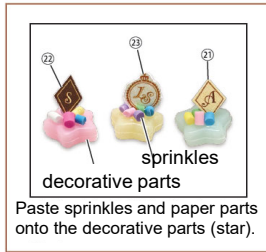
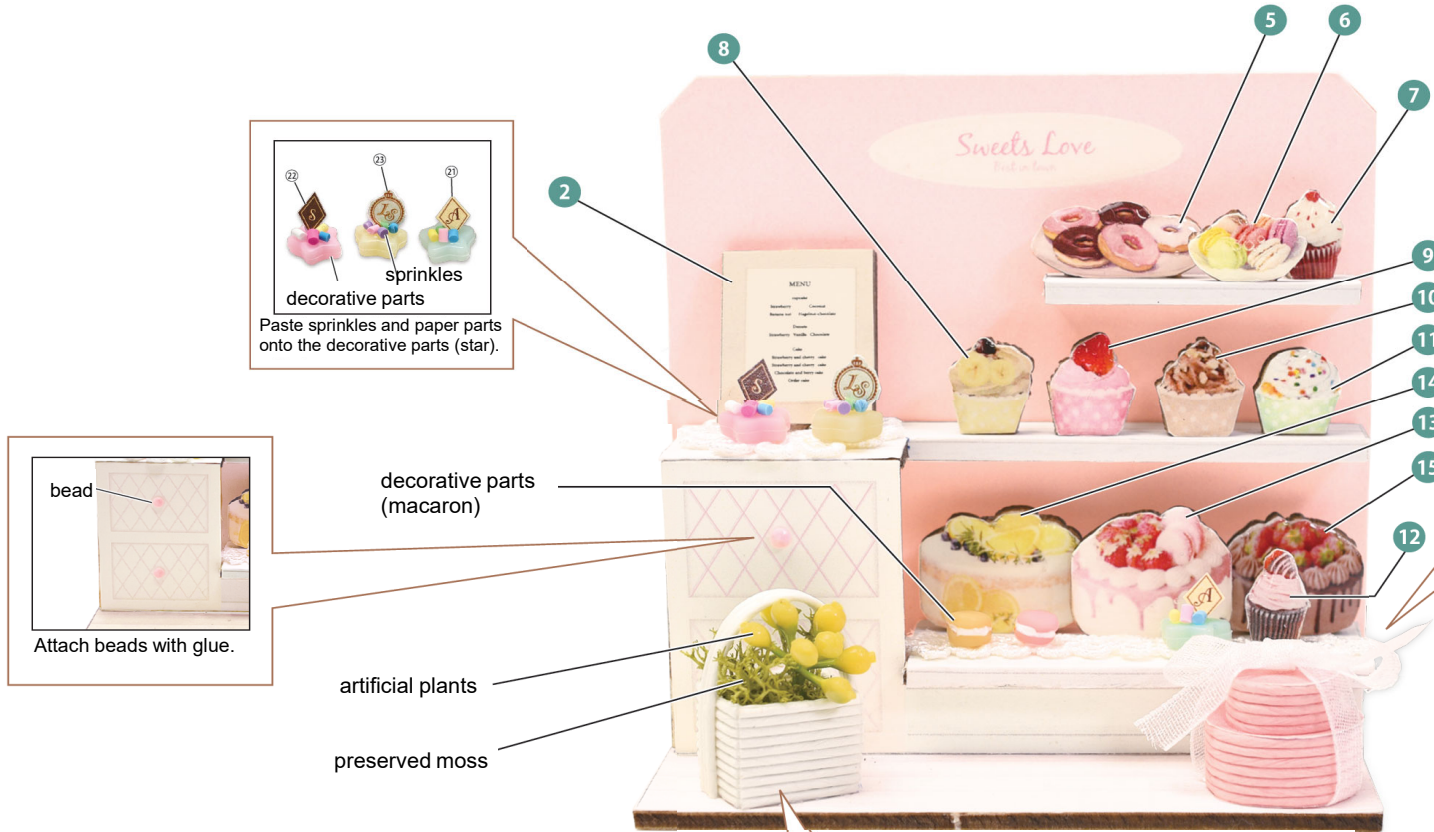
Remove burrs with scissors or a craft buffer.

Tip!

Wipe sanded surfaces to remove dirt and dust carefully with a soft cloth. Covering sanded surfaces with resin makes the pieces

How to make

Example of completed design



decorative parts (macaron)

artificial plants

preserved moss

5 strings [45 mm craft band]
7 [60 mm craft band]

1 Cut the craft bands in required length.

60 mm

2 Create a form in the material by using a pen as a former. Paste glue on the edge of the band and stick it.

45 mm

3 Create an another form the same as step 2.

20 19

4 Glue the paper parts as shown above. Cut the excess paper with scissors or a craft knife.

ribbon

5 Pile up the parts and wrap the ribbon around the boxes as shown above.

3 strings [59 mm craft band]
10 strings [59 mm craft band]

1 Cut craft bands as shown above.

10 strings [15mm 15mm 15mm 14mm] [craft band]

2 Scribe lines on outside face and bend it. Take care not to cut through the band.

3

10 strings

3 Create a planter as shown above.

Display your model with an acrylic case

HBR-417 Acrylic case perfume can store your model perfectly!! (sold separately)

Please see our website for details.