

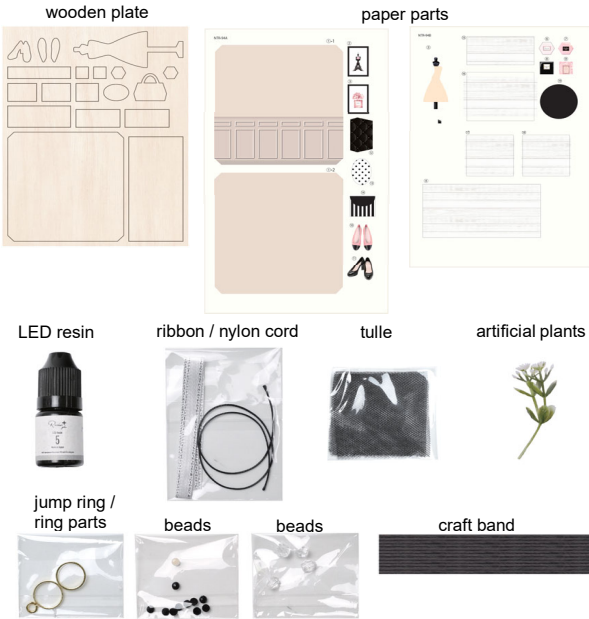
[Tools needed]

LED lamp, craft bond glue, glue stick, utility knife, cutting mat, scissors, tweezers, ruler, pencils, toothpick, sand paper, nippers

[Not necessary but convenient]

craft buffer, tray for parts, thick papers, paper, silicone mat, glue-gun, wet wiper

[Materials included]



* Images may vary to actual contents. * For materials in this kit, their colors, shapes, sizes and pattern may vary, due to manufacturing process. Natural wooden plates are naturally generated, their colors and wood grain will not be identical. * The wooden plate may warp slightly due to the excessive humidity. * For the metal parts, it is possible to have certain amount of flaws

Caution!

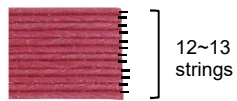
Keep out of reach of children and pets. Maybe harmful if swallowed.

Manufacturer: Eruberu Co., Ltd

2-1-20 Ekimae Ibaraki Osaka Japan <https://eruberu.co.jp/>

Cutting craft bands

Ensure use the correct color of band for each design element.



Read the following before you start.

* Please check if the contents are all included. * Please refer to the images and TIP reference while building your model.

* You will need:

a toothpick...to use bond glue and/or resin.
 a wet towel... to wipe your hands and to clean your workplace.
 paper... when using bond glue and to protect surfaces while working.
 tweezers... for detail work.
 A glue gun is also useful instead of a bond glue.

* Work away from direct sunlight and UV ray. When you don't use lamp, please turn it off. *Place a cardboard and a silicone mat under your work, so as to keep your work desk clean. Hence, you can move your work into the lamp right away and make it more convenient. * Printed images may be come off when rubbing the paper parts with an eraser or a

Preparation

Please see numbers and letters: Paper parts ①~⑱ Wooden parts ①~⑱

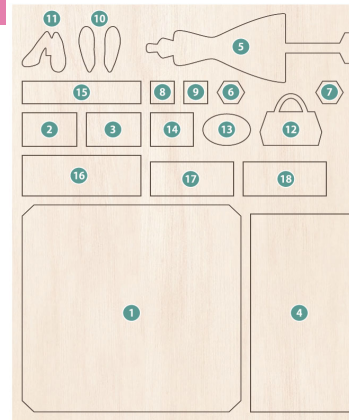
Separating the wooden pieces from the wooden plate



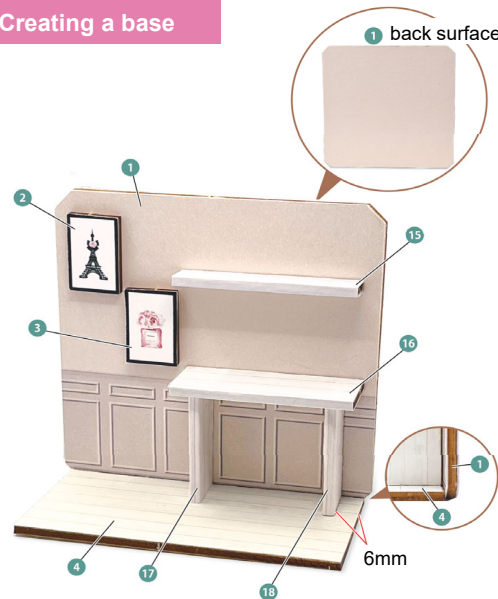
Cut off the wood pieces with a craft knife as shown in the picture above.

Tip!

* This wooden plate is laser processed. Wipe cut surfaces to remove dirt and dust before use.
 * Sand cut surfaces after



Creating a base



Pasting paper parts onto wooden pieces

Paste paper parts to corresponding wooden pieces.

Paste the paper parts onto a wooden pieces ①~⑭.

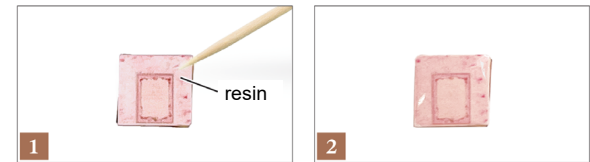


Form the wooden pieces in a C shape as shown below ⑮~⑱.



Coating parts with resin ⑮~⑱

Apply resin to ⑬ ⑭ in the next step.



Apply resin to the wooden pieces pasted paper parts.

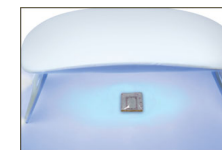
Cure it with LED lamp.

Curing resin

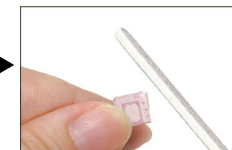
Time required

LED resin: 1~2 mins

* The time required depends on the season and the size of the craft.



Cure the resin coated parts with LED lamp.



Remove burrs with scissors or a craft buffer.

Tip!

Wipe sanded surfaces to remove dirt and dust carefully with a soft cloth. Covering sanded surfaces with resin makes the pieces

How to make

Creating parts and attaching them to the base

Example of completed design

1 15mm
Wrap the wooden piece with tulle, creating folds.

2 nylon cord
Triple wrap the nylon cord around the tulle and tie it a bow knot.
** Adjust the cord length as you like.*

1 40mm
craft band
Cut craft band in 40mm.

2
Create a planter in the material by using a pen as a former. Paste glue on the edge of the band and stick it.

beads
Paste the glue on the wooden piece and attach beads onto it.

3 80 mm
craft band
75 mm
craft band
3 strings
9 strings
Cut craft band as shown above.

2 75mm craft band
Create a planter in the material by using a pen as a former. Paste glue on the edge of the band and stick it.

3 80mm craft band
Wrap 80mm craft band around the planter created in step 2.

4 19
Attach paper part ⑱ onto the 80mm craft band. Cut the excess paper with scissors or a craft knife.

5 Bottom ribbon
Top
Cut a ribbon in 80mm. Paste it to the box created in step 4.

6
Tie the rest of the ribbon a bow knot and paste it onto the box as shown above.
** Adjust the length as you like.*

6 ~ 9
bead
Apply glue to the bottom of the bead and attach it to the wooden piece.

13
bead
Apply resin to the whole surface and put a bead onto it.

14
jump ring
bead
Apply resin to the whole surface and put a jump ring and a bead. Then cure it.

2 ring part
Put a ring part and cure them with a LED lamp while holding parts with tweezers.

2 ring part
Cut a ring part 1/3 off with nippers as shown above. Paste the glue to the ring part and put it on the bag.

Display your model with an acrylic case

HBR-417 Acrylic case perfume can store your model perfectly!! (sold separately)

Please see our website for details.