

## NDH-67 Sweets charm Waffle parfait



### Preparation

Tweezers, scissors,  
flat-nose pliers, scotch  
tape, wet tissue

Not necessary but  
convenient

Tray for parts

Eruberu Co., Ltd Email: info@eruberu.co.jp  
https://eruberu.co.jp

### Cautions ※ Please read carefully before you start.

Particles in the kit will cause injury if children accidentally swallow them. When children enjoy this kit please work together with adult.

\* Please check if the contents are all included.  
\* You will need:  
tweezers - for detailed work.  
wet tissue - for cleaning your hands or the table.  
an apron - to protective your clothes.

#### <Magical whip>

Drying time depends on temperature, humidity and size. Do not touch the whip until it dries fully. It may take more than 2-3 days to dry the part which is not exposed to air. The smell of the whip may disappear after it dries. The whip might shrink due to the evaporation after drying. The whip may discolor after it's exposed to the air for a long time. Decoration part colors may occur color transfer onto the whip. Wipe a nozzle tip off with wet wipes etc. after use. If the whip on a nozzle tip dries, it may difficult to clean it. We recommend using the magical whip as soon as possible after opening. Store in a cool, dry place away from direct sunlight.

#### <Pay attention when dealing with metal parts>

As the color of plate coating may be affected if they were touched with sweat or stored in dirt, please wipe away the sweats or dirt with a soft cloth before you store them. We also recommend you to store the metal parts in a bag with zipper. Please never wipe the metal parts with jewelry polishing cloth containing abrasive material, that will affect the color of the plate coating.

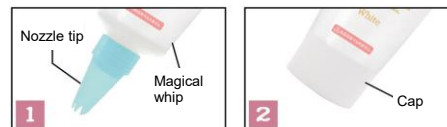
### Contents



Actual object may have certain level of difference compare with the image printed here, either in shape, size or pattern. Contents may be changed without notice. It is possible that the prints on the films may be affected when they were folded, or scratched by nails, scissors or other hard objects. For the metal parts, it is possible to have certain amount of flaws on the surface, due to plate coating process. There may be a certain hole on the bottom of the cup, but that will do no harm to your work.

### How to use ★Image printed on instruction may have a

#### How to use a magical whip



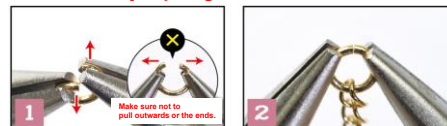
Open a cap and remove an inner lid.  
Attach a nozzle tip.

After you use, take out the tip and close the cap surely.

#### TIP

Please wipe the nozzle tip with wet tissue after use. Otherwise, the whipped cream will dry in the nozzle.

#### How to use a jump ring

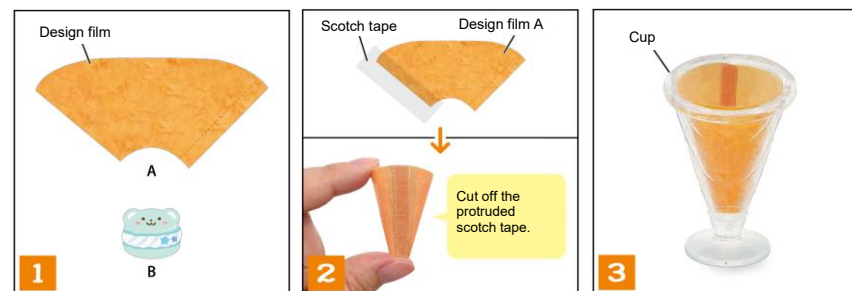


Gently twist one pliers straight downward, and the other pliers straight upward to open the jump ring.

Connect it to whatever you're using, and grasp the jump ring the same way again with both pliers. Gently bend one pliers up and the other pliers down to close the jump ring again.

### How to make

Enjoy creating your original charm, referring to the following image.



Cut a design film into pieces.

Paste some scotch tape onto the end of the design film A, and paste the both side of the film together as shown in the picture above.

Put it into a cup.



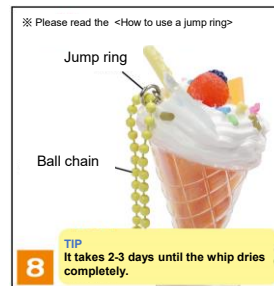
Squeeze out magical whip into the cup, until it is full.  
See above image about the way of design.

Add more magical whip onto the rim, and decorate the cream as shown in the picture above.

Add more magical whip!



Put all decorative parts onto the cream, and insert the eye bolt into the cream.



Attach all the jewelry findings after the cream dries.



The higher cream  
you create, it looks  
more gorgeous!!

Finished!!