



## Contents

Lesson manual 1 set / Instruction 12 sets

\*Containing silicone mold 4pc for 4 people per lesson  
\*The contents may change. Make sure all are included just before lesson starts.

for 12 people



silicone mold x 4

for a person



Jewelry findings (key ring, round jump ring, eyebolt cap)  
Decoration parts  
Glitter  
Design film

### ATTENTION \*read the followings before start

If children accidentally put the contents into their mouth or swallow them, it may cause damage to their health. Keep out of reach of children and pets. Materials used in this kit may vary in the color, shape, size and patterns. The quantity of the contents are inconsistent, which may make your artwork look different from the Sample of completed design. The contents may change. Make sure all are included before the lesson. The print may vary in color. The patterns of the film may come off by scratching with your fingernails or scissors. Dotted lines may remain on the edges of the film. Cut them off with scissors. Print on the film may be misaligned or blurry due to manufacturing process. Tweezers are convenient for doing some tiny work. Toothpicks are convenient for handling resin. If your hands or the worktable become dirty, wipe out with the Wet tissues. Wipe out the silicone mold before reuse it. The silicone mold may be hot by being irradiated with a lamp for resin. When the silicone mold is hot, remove resin after the mold cools down. Be careful not to stain your clothes. Metal parts may have uneven surface due to plate coating process.

●About LED resin  
Read the hand manual handouts for LED resin before start. When handling LED resin, work away from direct sunlight and UV ray (in the room away from the window). When you don't use lamp, please turn it off.

●About silicon mold  
Wipe off dust or garbage on the surface before use. This product is not edible. Do not put it into the mouth. This product is consumable product and deteriorated as you use repeatedly. Durability depends on the materials, ways or use, times of use. Resin cannot be removed neatly from the mold which has been deteriorated. When using colored resin, the color may stain the mold. Durability may change by the state of storage. When removing your artwork from the mold, do not use a spatula. Do not wipe the mold too much, which may cause damage to a finished artwork. Do not put the mold on the printed paper, which stains the mold with printing ink. The mold is an imported product. There may be some scratches. When producing a three-dimensional shape silicone mold, material to enhance heat-resistant, elasticity, and strength, and prevent from deterioration is put in the mold. Because of that, the color of the mold may tend to turn much yellow with time. This is unavoidable phenomenon to maintain the characteristics, but it does not have an effect on creating resin artwork.

【How to store】  
Do not store in direct sunlight and avoid dirt. Keep out of reach of children. Keep away from heat. The shape may change. Do not put one over another when storage.

●About metal parts  
As the color of plate coating may be affected if they were touched with sweat or stored in dirt, please wipe away the sweats or dirt with a soft cloth before you store them. We also recommend you to store the metal parts in a bag with zipper. Please never wipe the metal parts with jewelry polishing cloth containing abrasive material that will affect the color of the plate coating.

## Tools and materials needed

- Prepare the tools beside the table customers sit at. \*prepare a little bit more than necessity.
- Prepare any other tools as needed.

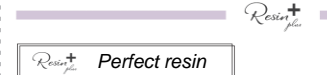
|                          |   |   |
|--------------------------|---|---|
| Tools needed             | LED resin                               | Please read the hand manual handouts before use   |
|                          | Lamp for LED resin                      | Resin usage: approx. 144g (for 12 people)   |
|                          | Toothpick                               | For work with handling resin  |
|                          | Tweezers                                | For tiny work   |
|                          | Scissors                                | For cutting films or something else   |
|                          | Flat-nose pliers                        | For fastening or loosening a round jump ring. *2 pliers are needed at a time                |
|                          | Masking tape                            | For fixing the parts  |
| Necessary but convenient | File                                    | For filing of the resin   |
|                          | Paper for covering table                | For covering table to prevent staining  |
|                          | Silicone mat (2in. x 2in.)              | For covering table and moving the artwork   |
|                          | Cardboard (2in. x 2in.)                 |   |
|                          | Paper towel (or tissues) or wet tissues | For wiping resin off the hands or tables  |
|                          | Gel cleaner (RS-1, RS-2)                | For wiping resin off the hands or used tools<br>*cannot wipe resin off the paper or clothes |
|                          | Plastic bag                             | For bringing the artwork home, for using as a garbage bag                                   |
|                          | Silicone cup (RS-445)                   | For dividing resin into a portion for a person  |
|                          | Embossing Heat tool (BFRS-12)           | For removing bubbles formed on resin *use before hardening resin                            |
|                          | Tray for parts                          | For preventing from missing tiny parts  |

## About a lesson

Hours for work : Approx.20min. (not including hardening time)

- 1 Prepare the tools and materials near the tables the customers sit at. \* Make sure all parts are included
- 2 Have the customers make their artworks.
- 3 After finishing, check all the artworks (Make sure resin fully harden and no gap between a jump ring).  
\*Dispose of the surplus resin after hardening the resin according to your local regulations. The resin is categorised non-recyclable plastic when disposal.

## Recommended products



Perfect by transparency, short hardening time, cost performance, undeformability and usability.  
Realizing resin artists' ideal.

### Comparison Chart of characteristics for Perfect Resin and Resin plus

| Factor  | Perfect Resin             | Resin plus                |
|---|---------------------------|---------------------------|
| Cost performance  | JPY24.0/g<br>50g/1200 yen | JPY24.8/g<br>55g/2364 yen |
| Density (thick liquid or watery liquid)                                       | relatively high           | high a little             |
| Odor (not fragrance)  | relatively weak           | weak                      |
| Hardening time  | short                     | relatively long           |
| Transparency  | ★★★★★                     | ★★★★                      |
| Usability (if removing from the mold neatly or not)                           | ★★★★★                     | ★★★★★                     |
| Deformability (if being warped or not when coating or removing from the mold) | ★★★★★                     | ★★★★★                     |
| Contraction (if shrinking or not when coating or removing from the mold)      | ★★★★★                     | ★★★★★                     |
| Hardness (hardness of something hardening)                                    | ★★★★                      | ★★★                       |
| Yellowing (period of time when turning yellow)                                | ★★★★★                     | ★★★★                      |



### Resin+ LED resin

Particular LED Resin about quality and price.  
Broaden and evolve the possibility of resin with the new quality and price.



### LED&UV Lamp

Resin lamp which harden resin, essential for resin handcraft. Vary in characteristics depending on wattage, form of lamp. Find the best one for your art style.



### [ Other products ]

#### Embossing heat tool

Easily remove bubbles formed on resin, which makes your artwork look prettier.



BFRS-12

#### Silicone cup

Essential for coloring resin. Convenient for dividing resin.



RS-445

#### Gel cleaner

Wiping off resin smeared on your hands or used tools.



RS-1/30ml

RS-2/100ml

For more information →





Image

## Contents

Lesson manual 1page / Instruction 12pages

\*Containing silicone mold 4pc for 4 people per lesson  
\*The contents may change. Make sure all are included just before lesson starts.

for 12 people

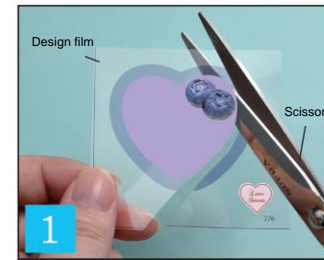
silicone mold  
x 4

(for a person)

Jewelry findings  
(key ring, round jump  
ring, eyebolt cap)Decoration parts  
Glitter

Design film

## Preparation



1

Cut the film.

\*The patterns of the film may come off by scratching with your fingernails or scissors.



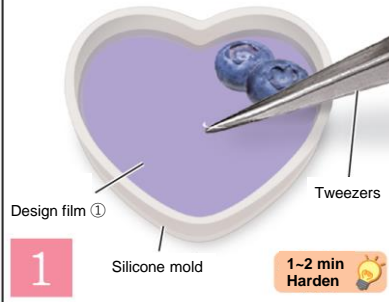
2

Design film ① Design film ②

## HOW TO MAKE

This is an example. Enjoy arranging yourself.

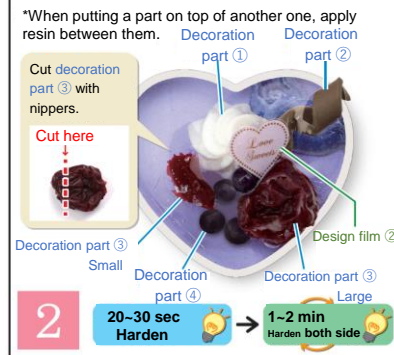
\*If the bubbles form, remove them with toothpick or embossing heat tool.



1

Design film ①  
Silicone mold1-2 min  
Harden

Pour resin to 1/3 of the height of the silicone mold, dip the film ① letting the air out.  
Add resin to 8/10 of the height of the silicone mold.



\*When putting a part on top of another one, apply resin between them.  
Cut decoration part ③ with nippers.

Cut here



Cut here

Cut here

Cut here

Cut here

Cut here

Cut here

Cut here

Cut here

Cut here

Cut here

Cut here

Cut here

Cut here

Cut here

Cut here

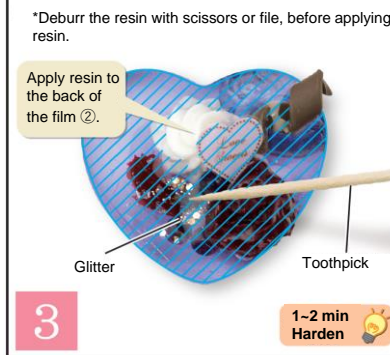
Cut here

Cut here

Cut here

Cut here

Pour a **small amount of resin** to the silicone mold, and place the **decoration part ①, ②, ③ and ④**.  
After hardening temporarily, **add resin to the rim of the mold**, and place the **design film ②**.



3

\*Debur the resin with scissors or file, before applying resin.  
Apply resin to the back of the film ②.

Glitter  
Toothpick

Remove from the mold. Apply resin to coat it, and put glitter onto it.



4


Key ring  
Eyebolt cap  
Jump ring1-2 min  
Harden

Attach an eyebolt cap with resin. Connect each parts with round jump rings.  
Finish!

### Tips of how to connect jewelry findings

\* Images are typical example, they may be different from the contents.

### Eyebolt cap

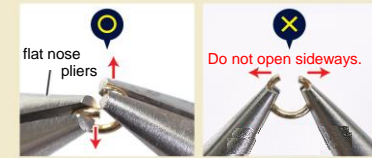
- It will be easier to work if you fix parts with masking tape previously.
- Be careful not to seal a hole of an eyebolt cap when coating with resin.
- Apply resin thoroughly to  after hardening, which will add strength hardening. Also, apply light from the sides and the back if necessary.

masking tape



### How to open a jump ring

Pinch a round jump ring with a flat-nose pliers and open back and forth.  
Put the part you would like to connect through the ring and fasten the joints firmly.

flat nose  
pliers

Do not open sideways.

### <ATTENTION>

If children accidentally put the contents into their mouth or swallow them, it may cause damage to their health. Materials used in this kit may vary in the color, shape, size and patterns. The quantity of the contents are inconsistent, which may make your artwork look different from the Sample of completed design. The contents may change. Make sure all are included just before the lesson. The print may vary in color. The patterns of the film may come off by scratching with your fingernails or scissors. Dotted lines may remain on the edges of the Film. Cut them off with scissors. Print on the film may be misaligned or blurry due to manufacturing process. Tweezers are convenient for doing some tiny work. Toothpicks are convenient for handling resin. If your hands or the worktable become dirty, wipe out with the wet tissues. Wipe out the silicone mold before reuse it. The silicone mold may be hot by being irradiated with a lamp for resin. When the silicone mold is hot, remove resin after the mold cools down. Be careful not to stain your clothes. Metal parts may have uneven surface due to plate coating process.