

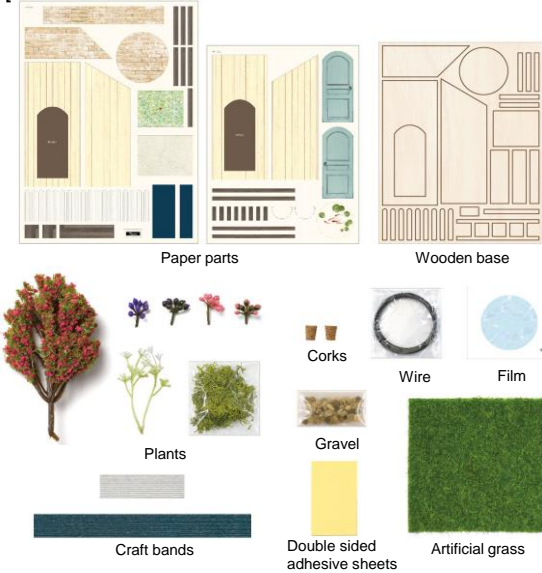
[Tools needed]

craft bond glue, glue stick, utility knife, cutting mat, scissors, tweezers, ruler, pencils, toothpick, sand paper, nippers, eyeleteer, needle-nose pliers, round-nose pliers, scotch tape

[Not necessary but convenient]

tray for parts, glue-gun, wet wipes, papers, pens

[Materials included]



* Image printed on instruction may have a certain level of color difference to the actual object. * The actual object may have certain differences compared with the image printed here. * For materials in this kit, their colors, shapes, sizes and pattern may vary, due to manufacturing process. Natural wooden plates are naturally generated, their colors and wood grain will not be identical. * The wooden plate may be warped slightly because of the excessive humidity.

[About Preserved moss]

* Preserved moss may get on your clothes, wall or floor. * If moss are exposed to fluorescent light or direct sunshine for long time, the colors may fade. Store in a cool, dry place away from direct sunlight. * Depending on the season, the colors, shapes and sizes of moss may vary. * This product is specially for craft. Do not eat.

Read the following before you start.

* Please check if the contents are all included. * Please refer to the images and TIP reference while building your model.

* You will need:

- a toothpick...to use bond glue and/or resin.
 - a wet towel... to wipe your hands and to clean your workplace.
 - paper... when using bond glue and to protect surfaces while working.
 - tweezers... for detail work.
- A glue gun is also useful instead of a bond glue.

* Work away from direct sunlight and UV ray. When you don't use lamp, please turn it off. * Place a cardboard and a silicone mat under your work, so as to keep your work desk clean. Hence, you can move your work into the lamp right away and make it more convenient. * Printed images may be come off when rubbing the paper parts with an eraser or a wet towel.

Caution!

Keep out of reach of children and pets. Maybe harmful if swallowed.

PREPARATION • REFERENCES

Parts cut out from the wooden base or wooden parts with the paper parts pasted on --- numbers in ●, Paper parts --- numbers in ○.

Paste the Paper parts on the Wooden parts



1 Cut off the wood pieces with utility knife as shown in the picture above.

2 Paste paper parts on the wooden parts of the same number.

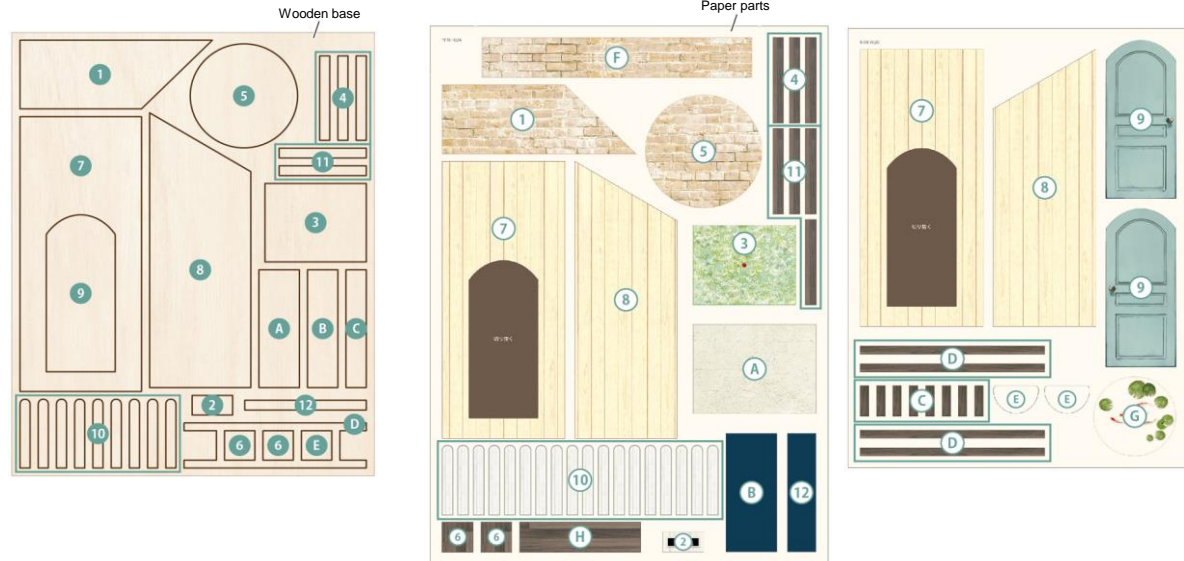
3 Cut off the protruding with the scissors or utility knife.

Tip!

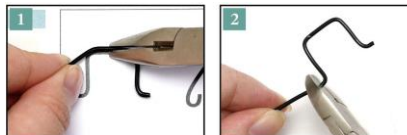
- * This wooden plate is laser processed. Wipe cut surfaces to remove dirt and dust before use.
- * Sand cut surfaces after removal.
- * Pasting the paper parts on the wooden parts with the glue stick will make your artwork look neat.
- * Apply the glue on the edges of the paper parts. The parts will be pasted firmly.
- * Make sure the paper parts dry before cutting of the protruding. If they are half-wet, they may be deformed or the paper patterns may be shaved off.

The Part number list

Paste ①~④ to ①~④ on **one side**. Paste ⑦~⑩ to ⑦~⑩ on **both sides**. Use ⑫, ⑬~⑮, ⑯, ⑰~⑱ in HOW TO MAKE.



Curve the Wire

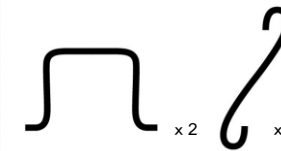


1 Curve the wire referring to the pattern sheets with round-nose pliers and needle-nose pliers.

2 Cut off the extra with the Nippers.

* Extensive bending of wire may cause breakage.

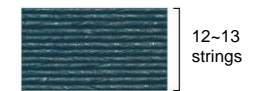
<Pattern sheet>



* Please see Japanese instruction on page 1. There is an actual size pattern.

Craft band

Ensure use the correct color of band for each design element.



* The craft bands vary slightly in width or the number of twisted paper strings, depending on their colors.

When you fix the parts on the artificial grass, temporarily paste them with the double sided adhesive sheets. Then fix parts with the craft bond glue.

Enjoy arranging it yourself

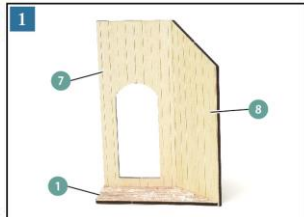


Artificial grass

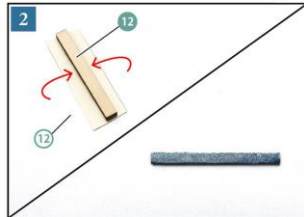
Apply the craft bond glue to parts and arrange them as you like referring to PREPARATION • REFERENCES and Example of completed design.

- * Parts cut out from the wooden base or wooden parts the paper parts pasted on--- numbers in ●, Paper parts --numbers in ○.
- * Cut the plants into appropriate length and divide them into some bunches depending on the spot you would like to apply.

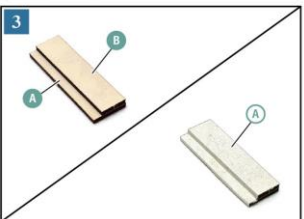
Create a base



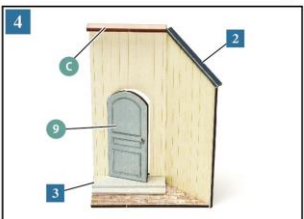
Paste each part together as shown in the picture above.



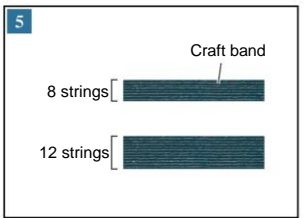
Paste 12 around 12.



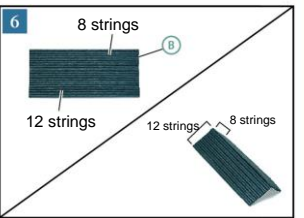
Attach A and B, and paste A on it.



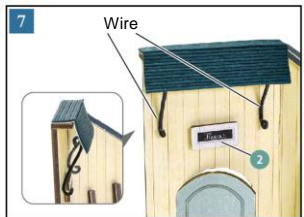
Paste each part together as shown in the picture above.



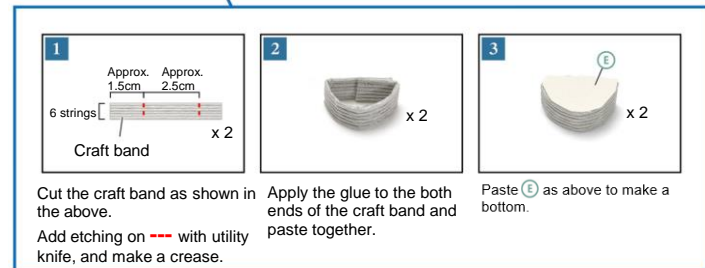
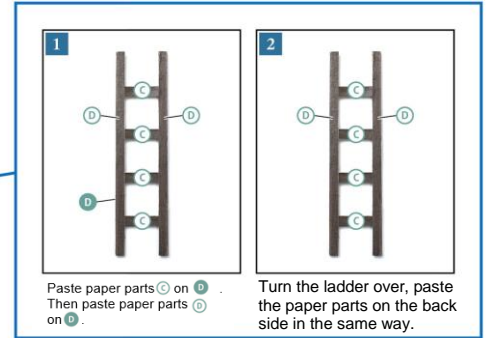
Cut the craft band into approx. 6cm x 2 pieces.



Paste 5 on the colored side of B, fold it as shown in the picture above.



Paste each part together.



1 Punch a hole on **3** of **3**, and paste **10** on the base.

2 Attach plants and gravel onto it.

3 After the plants fix, arrange other parts as you like.



1 Cut the wire into approx. 5cm x 2 pieces and paste them on the back side of **4**.

2 Turn it over and bend the wire as shown in the picture above.

3 Lay it on the other side and paste **11** on it.

4 Turn it over and paste the curved wire on **4** as shown in the picture above.

TIP
Apply scotch tape on the parts temporarily to make them fix firmly until the glue dries.



1 Fold **1** in half and paste together.

2 Cut out the Film. Roll **1** into the same length as the circle of the film and paste both ends of the craft band together.

3 Paste **6** on **5**.

4 Place each parts inside **6**.

5 Put **2** on **1** and paste each other.



1 Paste each part. * Paste **6** with the sides facing each other which the paper parts are pasted.

2 Paste **11**.